



daisy  
pool covers & rollers

# DAISY BELOW GROUND SYSTEMS

For a clutter free pool environment.

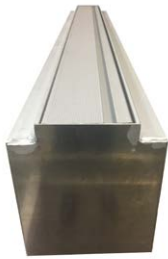


## BELOW GROUND BOX RANGE



Below Ground Box

- ✓ Ideal For: Pools surrounded by concrete or paving
- ✓ Suits pools up to 5.5m wide
- ✓ Below Ground Box Small Model also available for narrow pools up to 9m long.



Below Ground Box

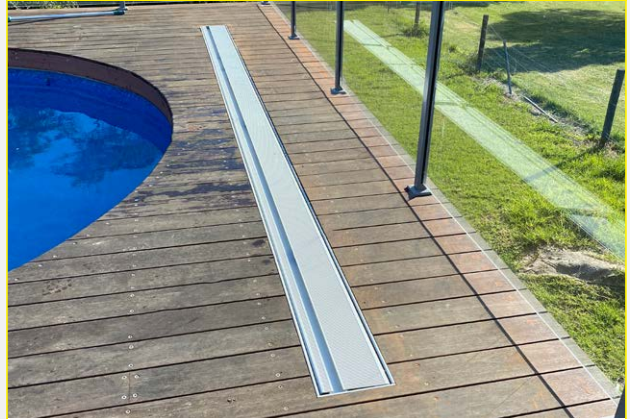


Below Ground Box Small

- Full aluminium
- Fitted flush to your paving, concrete or decking
- Slimline lid opening
- Single person operation
- Smooth 3:1 bevel gearbox operation



## DECK MOUNT ROLLER RANGE



Below Ground Box Small

- ✓ Ideal For: Pools with an existing pit or space underground that will protect the pool cover.



- Versatile: can be installed to suit most new and existing pools
- Installation only available in selected areas
- Note: pool cover must be installed to waterline maximum width
- 5 year structural warranty for your peace of mind



**SAVE** more of the sun's warmth. Warms your pool by up to 8°C for free.



**SAVE** on water, up to 10,000L per month. Improves water retention.



**SAVE** on heat loss. Reduced heating costs and heat loss.



**SAVE** on cleaning. Helps keep out dirt and leaves.



**SAVE** on chemicals. Reduce salt and chemical use by up to 50%.



**SAVE** on time. Rolls off and on in 30 seconds.



**SAVE** on evaporation. Reduces evaporation by 99%.



**SAVE** money. Higher quality. Better design. Lasts longer.

**AUSTRALIA'S FAVOURITE.**

1300 55 18 11 • daisypoolcovers.com.au

**Quality | Technology | Service**

