



Daisy Quality

We stand by our product.

daisy
pool covers & rollers

Under Bench Roller

Installation Instructions



AUSTRALIA'S FAVOURITE.

1300 55 18 11 • daisypoolcovers.com.au

Quality | Technology | Service



Before you start, make sure you have a clean and clear area to work in so you do not damage the surface finish of the Under Bench Roller parts.

You will need:

- 2x 10mm spanners
- 13mm spanner
- Hammer Drill
- Hammer
- Something to mark the anchor position on the ground (pencil)

Daisy wants you to be as happy as possible with your purchase. With a little care we can make sure the frames and planks are not damaged or scratched during installation. Don't put parts directly on the ground. Instead, use some pool cover off-cuts and carefully place the parts on this to protect them. Scratches and chips are not covered under the pro rata warranty.

Carefully unpack, layout and check all parts. Remember, you will be building the UBR upside down.

- 2x pre drilled planks (with indicator stickers on under side).
- 2x end frames with coloured dots to indicate where to mount them (8x M6 bolts, nuts and washers per frame). Bolt down tabs face towards middle.
- 1 or 2 centre C frames (8x M6 bolts, nuts and washers per frame). Planks under 3.25m long have 1 centre C support, over 3.3m have 2 centre C supports. Make sure opening of centre C support is facing towards pool.
- 1x tube assembly (with M8x 20mm retaining bolt and washer).
- 1x hand wheel adaptor (with M8x 40mm retaining bolt).
- 1x hand wheel.
- 1x cover connection kit (cords and eyelet kit).
- 1x 10mm masonry drill bit.
- 2x masonry anchors per frame (6 or 8 depending on how many centre C frames).

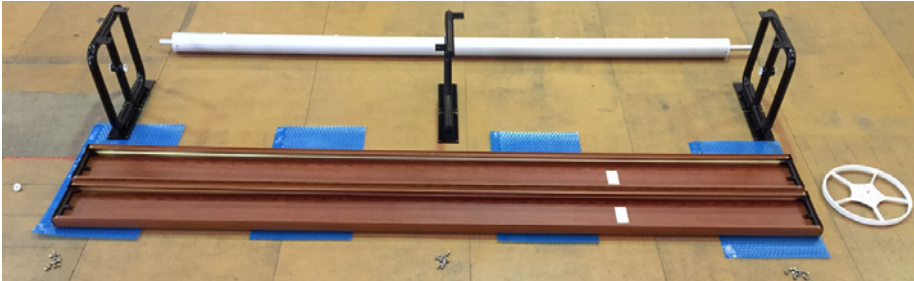
Notes:

- Over cover is not required for UBR.
- UBR must be bolted down with centre C frame opening to face towards pool.
- Roller tube can be installed to have hand wheel on either end.
- The UBR can be installed at the water edge or with a walk way of up to 1m from the pool end. Before you anchor the UBR to the ground, make sure the roller operation (deploying and recovering the pool cover) is correct.

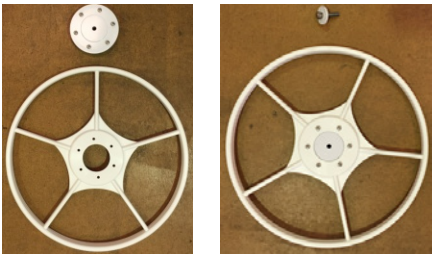


INSTALLATION (POWER VERSION SEE PAGE 6)

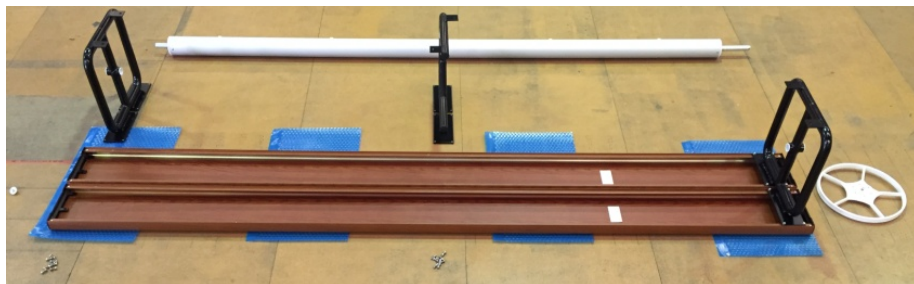
1. Unpack and lay out all parts. Lay the 2x planks upside down with the arrows facing each other for correct orientation. Note the different coloured dots on each frame correspond to the same coloured dots on each end of the planks, so ensure you place the frames at the correct end.



2. Mount hand wheel to adaptor using the 6x screws in the adaptor.



3. Starting from one end – (note coloured dots on frame and plank) insert one end frame onto the 2 planks while lining up the bolt holes. You may need to clip in the frames. Install loosely the 8x M6 mounting bolts – do not tighten. **Note: Bolt down tabs to face towards centre of the UBR**



4. Install centre C frames – insert the C frame (or frames depending on size) onto the 2 planks while lining up the bolt holes. You may need to clip in the frames. Install loosely the 8x M6 mounting bolts – do not tighten.



INSTALLATION CONTINUED

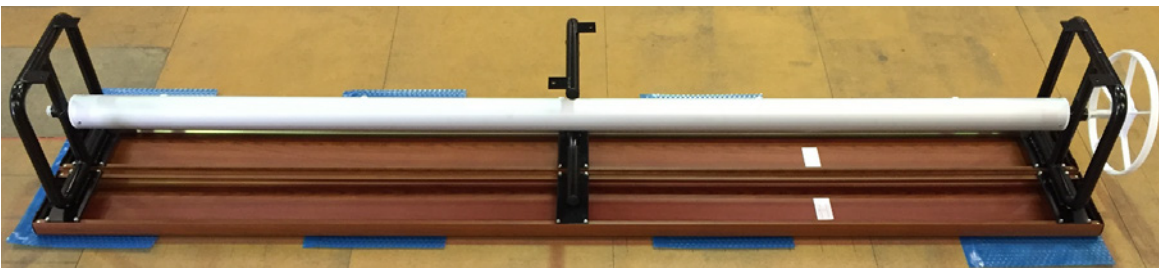
5. Install tube assembly, then end frame onto the 2 planks while lining up the bolt holes. You may need to clip in the frames. **Note:** Bolt down tabs to face towards centre of the UBR. Install loosely the 8x M6 mounting bolts – do not tighten. Once you confirm the tube turns freely, tighten all frame mounting bolts.



6. Install and tighten the M8x 20 retaining bolt and washer to the non hand wheel end.



7. Install the hand wheel adaptor on the drive end of the roller tube.



8. It is easier to get someone to help carefully roll over the UBR and locate it where you want to anchor it to the ground. **Note:** Centre C frame support opening to face towards the pool



9. Locate the UBR centralised to the pool in the position desired to anchor it down.

Do Not anchor down at this point

- a. Install pool cover.
- b. Connect pool cover to roller using the cords and eyelets. Align the centre Feather Plug on the tube and mark the pool cover about 100mm in from the edge of the pool cover. Punch a hole through the cover with the eyelet punch supplied.
- c. Install eyelets. Place the male half of the eyelet under the punched hole and female half on the top. Tap together on the ground.
- d. Secure cord to cover and roller. Tie a loop at one end and attach to Feather Plug on roller. Thread other end through cover eyelet and tie off to cord adjuster or bowline knot.
- e. Repeat for all cord attachments, then adjust the cords so the cover comes onto the roller tube evenly. Start from the centre and work out to the ends, aiming to set cords to retrieve evenly. Minor adjustments may be needed to fine tune the settings for smooth cover retrieval.

10. Make sure the pool cover goes on and off the pool and roller smoothly before you fix it down. Mark the ground through the anchor tabs of the frame **Note:** You may need someone to hold the UBR to stop it moving around to ensure correct UBR location.

- a. Move UBR out of the way.
- b. Drill 2x 10mm holes per frame.
- c. Move UBR back into position.
- d. Tap in the anchors and tighten.



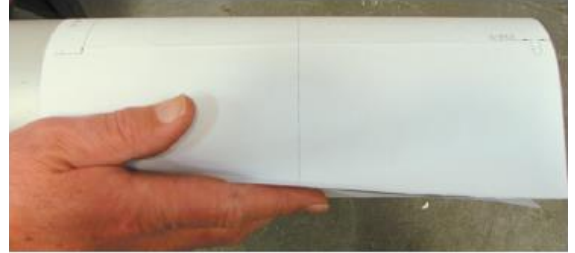
POWER VERSION

Expert Tip:

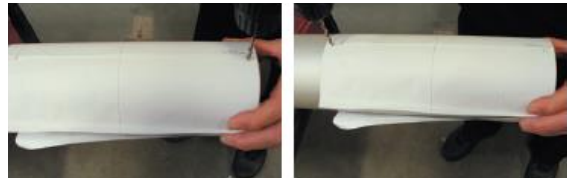
Use power accessory box under planks for clearance on frame PV hoop.



1. Decide what end you want the Daisy Power, frame, control housing and tube motor. To mount the tube motor in the tube: On the roller end you want the control housing and tube motor, wrap the paper template around roller tube. Note the arrows indicating the end of the tube and the arrows that match together when the template is around the tube. This will ensure the template is square for correct tube motor installation.



2. **Without** the drive motor inside the tube, mark and drill 6x 4.5mm holes through the template with the 4.5mm drill bit (there are 3 holes to be drilled around the tube 8mm in from the end of the tube and a further 3 holes to be drilled around the tube approximately 285mm from end of tube).



3. Insert the drive motor into the tube, making sure the drive motor is pushed all the way in so the disengage system works correctly. If there is a feather plug in the way, remove it, cut the tip of the feather plug off (so it does not hit the tube motor), then replace after motor install. Using the 4.5mm drill again, drill through the 6 holes in the tube, through the drive motor flange.

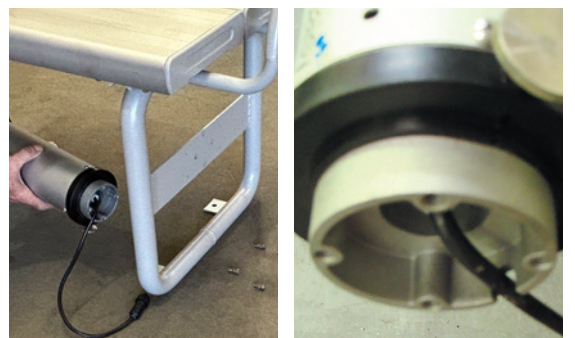


Note: Drive motor may have holes already in flange, ensure these holes are not near the mounting holes.

4. Insert and tighten the 6x mounting screws. Important: make sure screws around end of tube do not interfere with tube motor (don't touch tube motor) – check by disengaging drive to freewheel (pulling pin out – see To Disengage Drive in operation section).

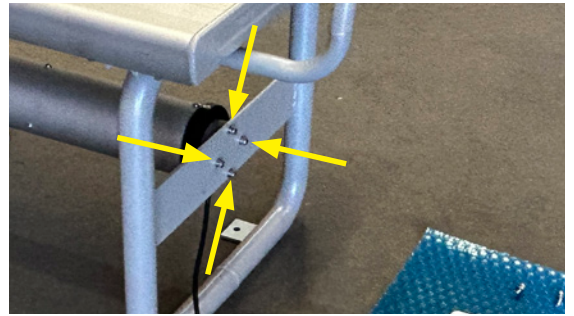


5. Ensure drive motor wire is running through the recess in the housing on the drive motor end, be careful not to pinch wire when mounting.

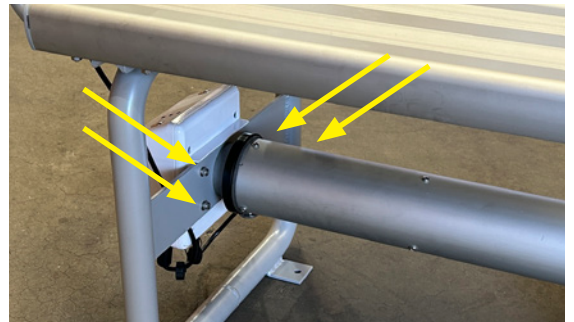


6. Install the tube motor onto the end frame, secure firmly 4x mounting bolts.

Important: Make sure recess is facing DOWN when mounting to frame to avoid water filling up inside.



7. Install the control housing, secure firmly the 4x mounting bolts.



8. Plug in the drive motor wire to the connector socket on the underside of the control housing.

Note: Each connector socket has labels for the correct appliance.



9. Clamp the panel to the drive motor end frame and plug into 'Solar' connector socket on the underside of the control housing.



10. Adjust the solar panel so it is facing the sun at midday (or at the meantime your solar panel receives full sun). This will ensure the optimum solar panel position for your location. If your solar panel is not in direct sunlight for the majority of the day, you will need to recharge the battery using the AC charger. The regularity of recharging using the AC charger will be determined by the amount of sun the PV panel receives and your roller usage.

Note: If you do not have enough sunlight on the solar panel to maintain battery voltage, consider the #1262 PV Post Extension kit that comes with a 5m extension cord and post to insert into the ground that the solar panel clamps to.



11. Plug in AC Charger to fully charge battery before first operation.

OPERATION

General

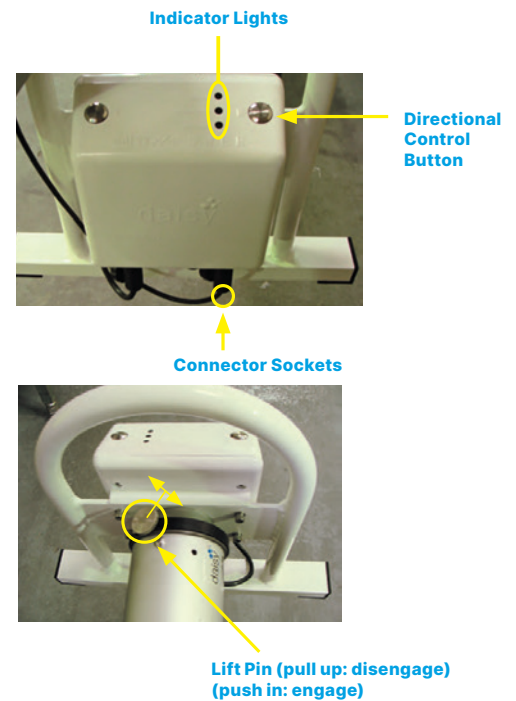
Forward and reverse buttons control the drive motor direction. Remote control operation is the same operation as the buttons on the control housing. Control button and remote button will only operate the motor while the button is being pressed. Ensure the AC charger pack is not exposed to water or weather. Plug in AC charger into the AC Charger connection to recharge battery.

To free wheel the roller tube, disengage the motor drive by lifting the locking pin – lift up to free wheel (rocking the tube back or forward may be required to take the weight off the pin to disengage).

For best operation, the pool cover should be cut to water line or less.

Ensure the cover has no folds or any obstruction to catch on when rolling up.

Tip for larger pools: To make it easier to put the cover back onto the pool, disengage the drive motor then push the deploy button on the remote as you are pulling the cover back onto the pool from one side.



Daisy Power Auto-Roll Function

You can set the Auto-Roll timer function in either direction. As the Auto-Roll is a timer, the roller position and cord length (how much cord is unrolled off the roller) will affect where the Auto Roll will stop.

The Auto-Roll is programmed on the **'Tube Motor' buttons** (left and right) on the control housing or remote control buttons after pressing for **5 seconds**, with hesitation indicator.

To engage Auto-Roll, ensure the disengage pin is engaged on the **TUBE MOTOR**, you need to press then release the button after the hesitation and 'beep' at 5secs...but before 10secs of holding down either the directional control button on the control housing or the remote control button.

To stop operation, press any button.

To manually operate tube motor on the roller after Auto-Roll program, press any button.

The Auto-Roll has a factory setting of 90 seconds.

You can program using either the remote control or the buttons on the control housing, however using the remote within a 1 metre distance will give more consistent results (as it is more generous with the timing of pressing 'both buttons at once')

Note: Control housing won't go to sleep with AC plugged in.

When using the remote, make sure you are close to the control housing on your unit to make sure there is no electrical interference while programming.

To Program Auto-Roll

Step 1 : Press and hold both control housing tube motor direction buttons (right and left buttons) simultaneously until the unit 'beeps' (unit will 'beep' once for every 15 seconds currently programmed), indicating that you have entered the setup mode. If you are using the remote to program (not the control housing buttons), you must press and hold one remote button, wait 1 - 2 seconds then while still holding the button press and hold the other button. If you have done this correctly the tube motor will stop, then after 10 seconds (after tube motor stopped) it will Beep to indicate you have entered programming mode.

Step 2: to 'increase' the auto-roll run time, press the right direction button; each press adds 15 seconds, and you will hear two beeps to confirm the setting.

To 'decrease' the auto-roll running time, press the left direction button; each press subtracts 15 seconds, and you will hear a single short beep to confirm the setting.

Remember: the minimum auto-roll running time cannot be set lower than 15 seconds.

Step 3: After making the adjustments, wait for 5 to 10 seconds and listen for a long beep signalling that it has saved the setting and exited the set up mode.

Step 4: wait over 10 seconds, then press and hold both direction control buttons again to confirm the set running time by counting the number of beeps; each beep represents 15 seconds. For example, if you hear three beeps the running time is 45 seconds.

Step 5: Test operation



OPERATION

Programming New Remote Control

Every new remote control needs to be programmed (paired) with the control housing.

To program a remote control simply:

1. Press any direction button on the control housing unit to wake up the control housing.
2. Press the *Program* button for 1 to 3 seconds.
3. Press *any* button on the remote control for 1 second (unit may start operation as remote control is now programmed) .

Note: Only one button is required to be pressed to program all the buttons on the remote control unit.

Daisy Power Program Button



LED Indicator Light Logic

1. When motor is operating, the battery LED will show red as it's loading the battery and drawing the power.
2. Red Light is an indicator of what control housing is doing, it is NOT an error indicator.
3. Battery charging lights may 'flicker' to indicate the charge rate. The faster the 'flicker' the faster the charge (may look like a different colour) the slower the 'flicker' the slower the charge.



Solar light:

Red Light = Charging the battery, voltage <10.5V
Yellow light = Charging the battery, voltage (10.5V~11V)
Green light = Full charged, battery voltage >11V

AC charger light:

Red Light = Charging the battery, voltage <10.5V
Yellow light = Charging the battery, voltage (10.5V~11V)
Green light = Full charged, battery voltage >11V

Battery light:

Without Solar or AC Charging, after the motor operation (pressing a button not in auto roll):

Red light = battery voltage <10.5V – or while AC plugged in battery may stay red indicating available – not a fault.

Yellow light = battery voltage (10.5V~11V)

Green light = battery voltage >11V

Regularly check tension of all screws and mounting bolts.

Test Procedure

If there are any issues with the operation or the unit is unresponsive, before a service call can be requested (to be completed by end user), plug in and turn on AC charger continually for a minimum of 3 days (note keep all 240V cords and charger protected from weather and further than 4m away from pool water).

AC charger is normally warm when working. If Daisy Power unit is non-responsive, do the following checks:

Is the unit responsive? ie. Is there any partial movement, humming, clicks – or any response at all?

What is the light display?

Note:

- If AC charger is NOT plugged in, lights will stay illuminated for approximately 1 minute after any button press, then turn off.
- If AC charger IS plugged in, lights will stay on all the time (see Indicator lights image on this page).

After fully recharging (for a minimum of 3 days) to report any fault, record what is happening when you test operation (press button) now?

- AC charger when plugged in will operate from the AC charger through PCB at full power.

Is the unit responsive at all with both remote control AND buttons on the control housing in both or any direction...any partial movement, humming, clicks or any response?

Is there any change from before charging?

Is the Tube Motor wire plugged in correctly or is there any damage to the tube motor wire?

Note: For units behaving strangely: to re-boot system unplug the tube motor plug.

- Leave tube motor wire unplugged as this isolates the battery, wait 2 minutes then re plug in tube motor to check operation. What is the result?

Check correct connection of AC and PV wires into the control housing. If AC and PV wires are reversed no charging will happen.



Tube Motor

AC Charger

PV Panel



Indicator lights

OPERATION

Service Call Inspection

Note: Charges may apply.

Look at surroundings + report **all** readings and findings.

- Where is the unit located, how much sun during the day is the solar panel receiving? (Please provide a photo of installed location and surroundings).
- Is there anything impeding the solar panel performance?
- What is the 'normal' operation of the unit (how does the customer use it, how many times a day, how long between AC charges)?

How long has AC charger been plugged in? (Record any response during testing).

Make sure AC charger is plugged in, turned on – test AC charger.

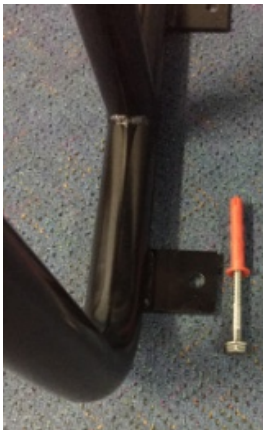
Warranty period on electrical components (remote/control housing/tube motor/AC charger) is 2 years limited warranty. This warranty does not cover battery failure.

See Daisy Power T&C:

<https://daisypoolcovers.com.au/wp-content/uploads/2022/05/Daisy-Power-Showcase-Warranty.pdf>

All mechanical parts: 10 year pro rata warranty.

Note: Pro Rata warranty does not cover scratches or chips to the powder coating finish.



Register Your Warranty Online

Because your Daisy can last for so many years, register your warranty online at Daisy. We'll keep all your details safe so you don't have to!

Two easy steps:

1. Scan your purchase receipt. Ensure the date of purchase is clearly visible.
2. Go to our website, and click on Warranty Registration. Fill in the details and send!

Please staple your purchase receipt to this page.

Register online now at daisypoolcovers.com.au

We rarely get a warranty claim but just in case anything goes wrong we're here to help you. All Daisy products come with a pro-rata warranty which covers the purchaser for defective materials or workmanship on a pro-rata basis. The manufacturer will repair or replace the product upon inspection or photo image. Daisy reserves the right to refuse repeat claims of the same damage. This warranty may be void if the purchaser fails to comply with the manufacturer's install instructions. Retain your proof of purchase for warranty coverage or register your warranty online.

AUSTRALIA'S FAVOURITE.

1300 55 18 11 • hello@daisypoolcovers.com.au
daisypoolcovers.com.au

Quality | Technology | Service

