



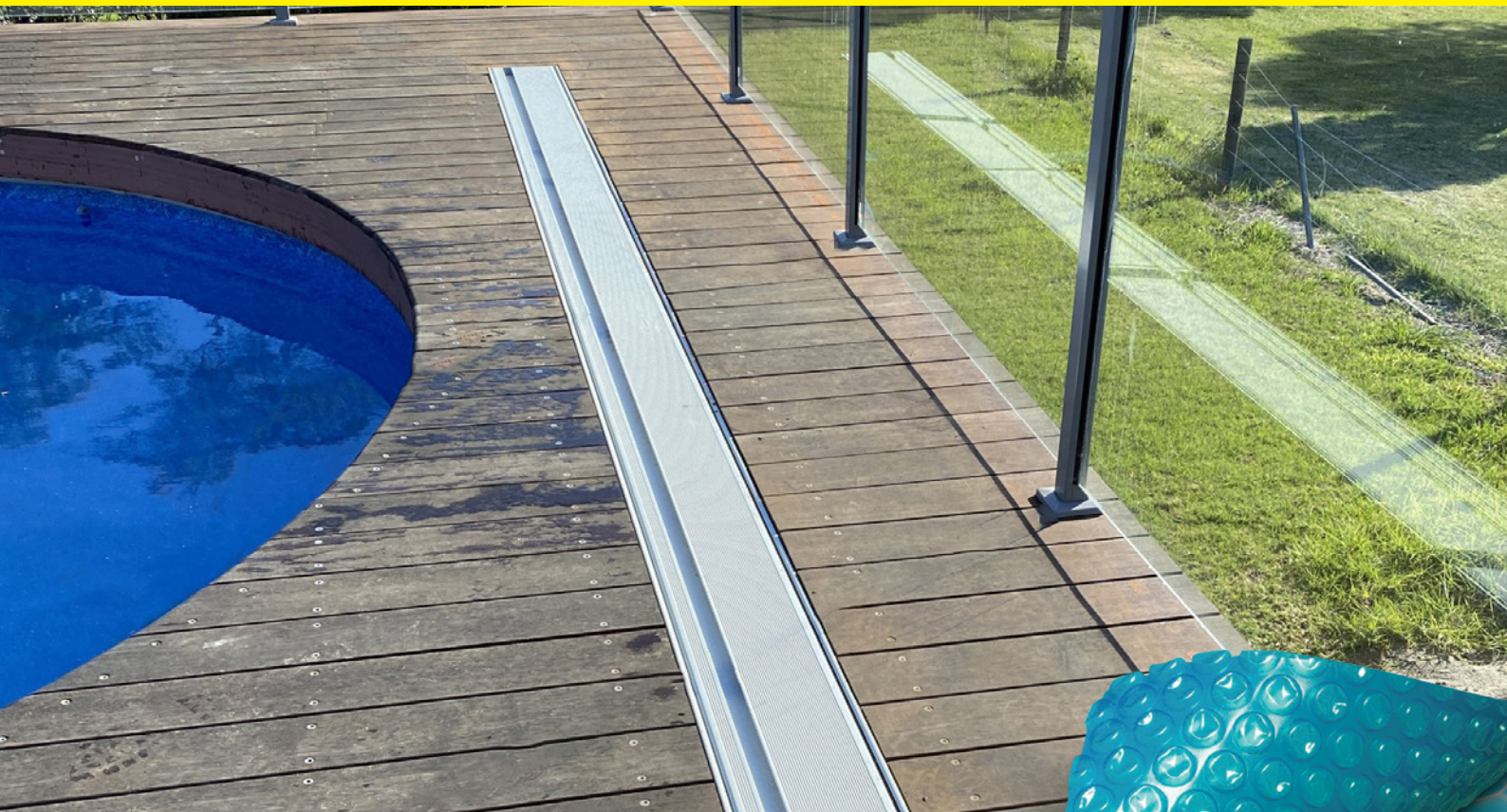
**Daisy Quality**

*We stand by our product.*

**daisy**  
pool covers & rollers

# Deck Mount Roller

## Installation Instructions



**AUSTRALIA'S FAVOURITE.**

1300 55 18 11 • [daisypoolcovers.com.au](http://daisypoolcovers.com.au)

Quality | Technology | Service



**Before you start, make sure you have a clean and clear area to work in so you do not damage the surface finish of the Deck Mount Roller parts.**

**You will need:**

- Phillips screwdriver
- 10mm spanner
- 13mm spanner

Daisy wants you to be as happy as possible with your purchase. With a little care we can make sure the frames, sides and lid are not damaged or scratched during installation.

Don't put parts directly on the ground. Instead, use some pool cover off-cuts and carefully place the parts on this to protect them. Scratches and chips are not covered under the pro rata warranty.

Carefully unpack, lay out and check all parts. Remember, you will be building the DMR upside down.

- 1 x Lid Assembly (including 2 x sides + 1 lid)
- 1 x gearbox (including 3 x 6mm + 2 x 8mm mounting bolts & nuts)
- 8 x stainless steel 316 screws
- 2 x end T frames
- 2 x large mounting plate
- 2 x small mounting plate
- 1 x tube assembly (M6 drive bolt & nut)
- 1 x slave end mount (1 x M8 bolt & nut)

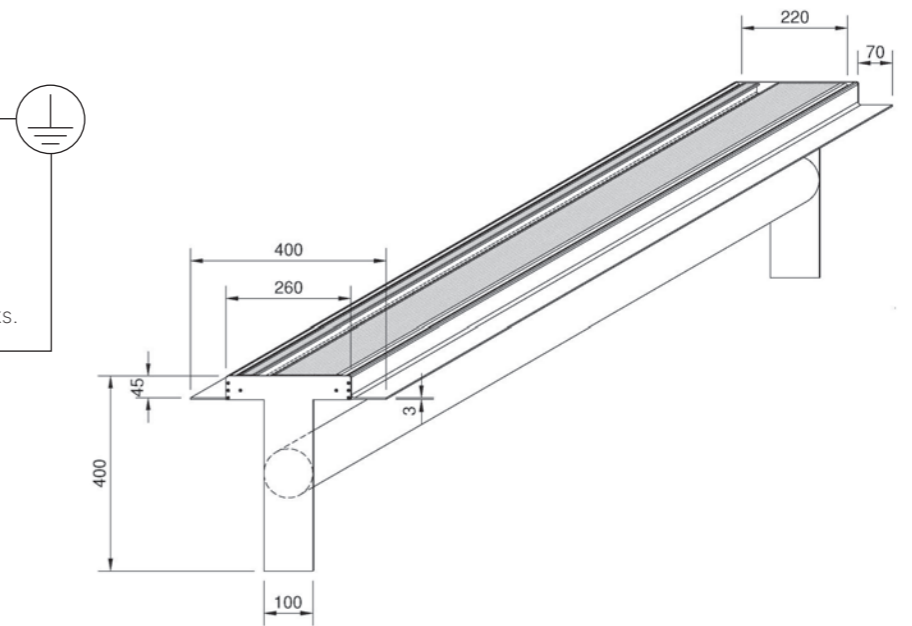
**Notes:**

- Over cover is not required for DMR.
- The DMR unit can be suspended under a deck frame or rested on a wall structure or support beams. The mounting options are up to you.
- The DMR has a mounting plate 50mm lower than the top lid all the way down the length, on the front and back. This is so the unit can be mounted on or under a frame while still having decking/paving come up to the top of the unit.
- The structure or pit you have will determine how the unit is mounted. We don't drill mounting holes as we don't know how the unit will be secured. Similarly, we don't supply the mounting screws/bolts/anchors as the requirements vary too much.
- Length of DMR is to the outside of the unit. Prepare mounting for DMR to either sit on or be suspended under, noting finished height of the unit should be level with the finished paving/deck.
- For transport, the DMR is delivered flat packed.
- 400mm depth clearance required in the pit for the cover to be rolled up in.

Scan here  
to watch our DMR  
Installation Instructions  
video for further help

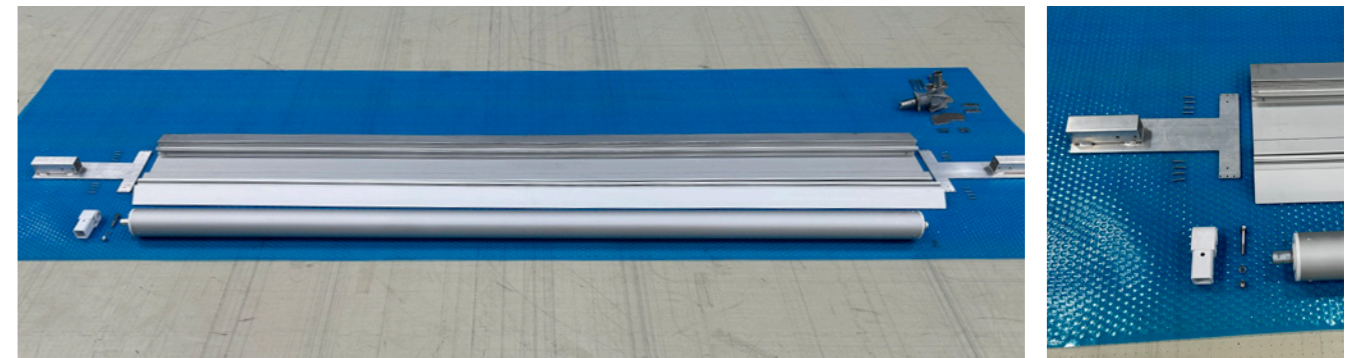


Electrical Bonding AS/NZS 3000:2018  
(Wiring Rules):  
If unit is installed within arm's reach (1.25m) of the pool edge, engage a licenced electrician to equipotential bond the unit.  
Check state legislation before commencing works.

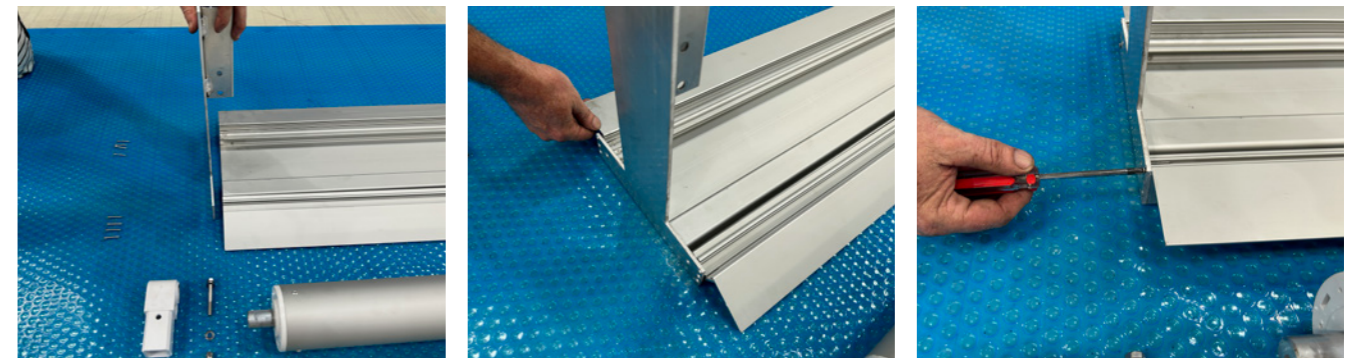


## INSTALLATION INSTRUCTIONS

1. Unpack and lay out all parts. Lay the lid and sides upside down with T frames on each end.  
**Note:** There should be 8 stainless steel screws for each end T frame.

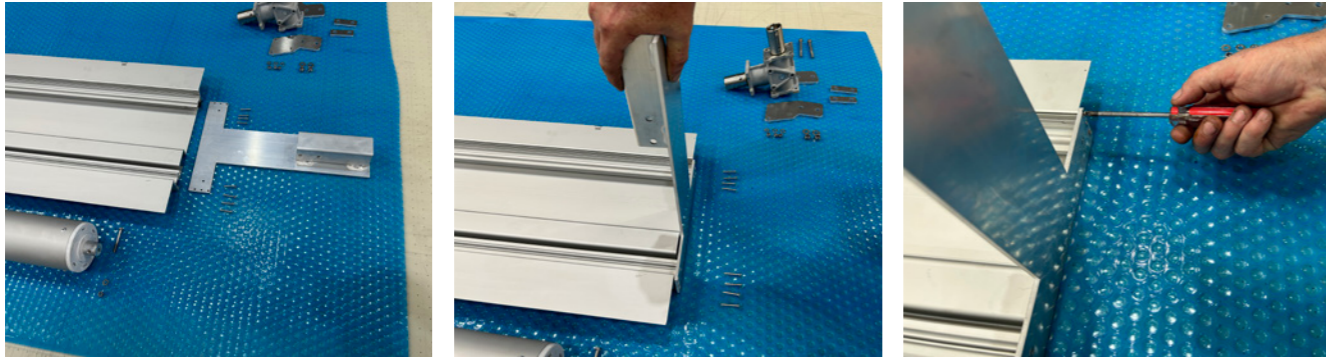


2. Install one end of the T Frame first. Line up screw flutes to end frame holes then insert the 8 x screws and tighten.  
**Note:** you may have to lift up the extrusion to line up the holes.

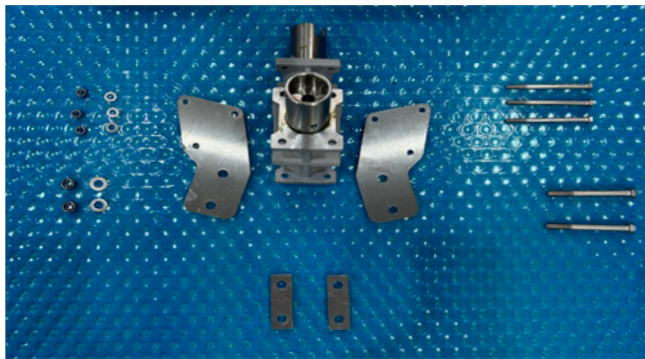


# INSTALLATION CONTINUED

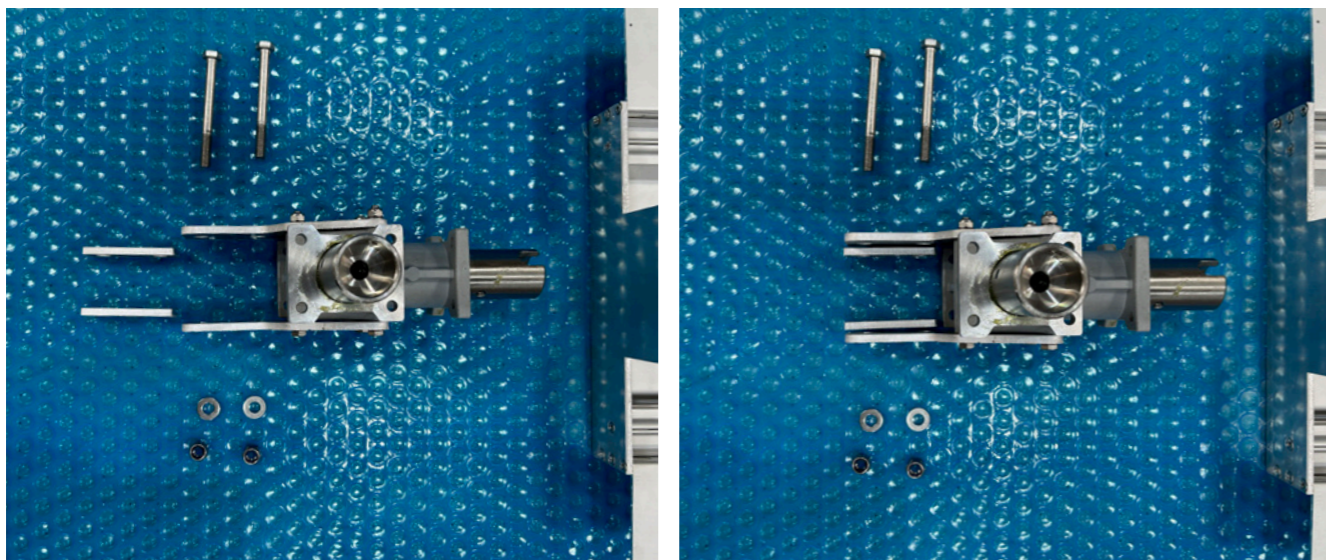
3. Install second T frame following the steps above.



4. Decide what end you want the gearbox winder to be installed. Lay out all parts and note the slotted coupling required for handle operation is to be at the top.



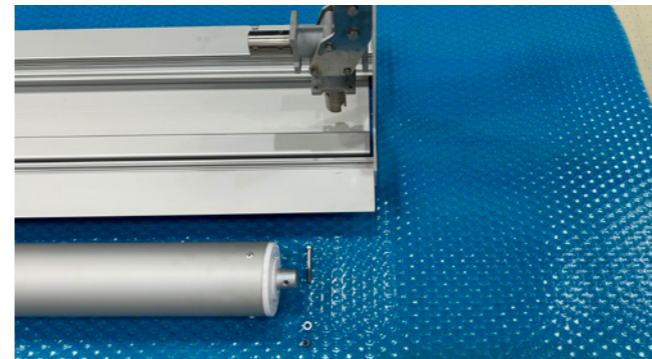
5. Install the large mounting plate onto the gearbox using 3 x 6mm bolts taking note of the plate offset. The small mounting place spacers should go to the inside to mount onto the square post.  
**Note:** Do not tighten bolts yet.



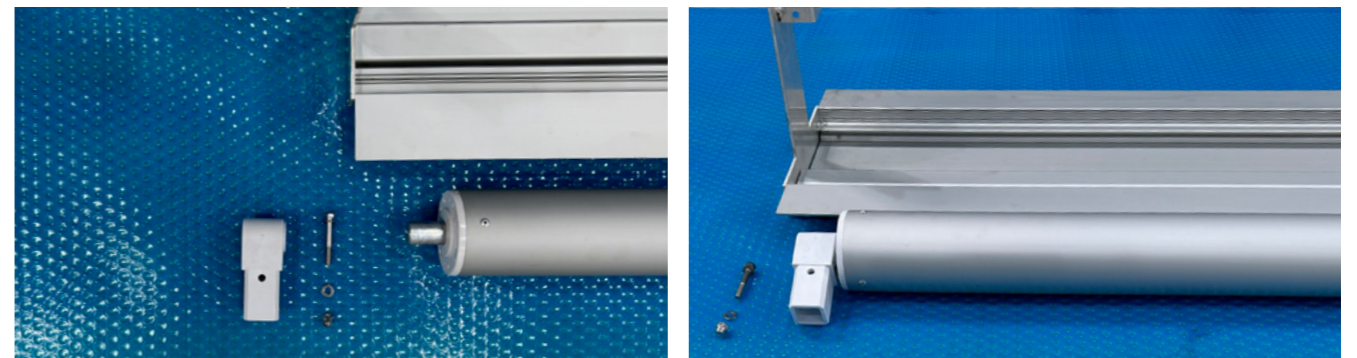
6. Mount the gearbox to the post and tighten all mounting bolts.  
**Note:** The coupling with the hole faces the tube.



7. Prepare the tube for installation using the end slug with the hole to connect the gearbox using a 6mm bold and nyloc nut.

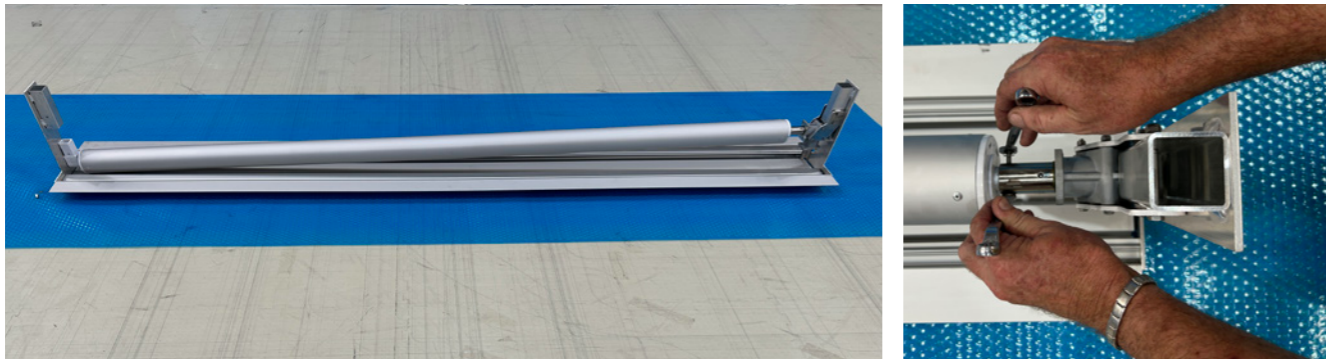


8. Prepare the slave end ensuring the flat side of the plastic mounts to the frame and the extended side to the tube – then slide the mount onto the end slug

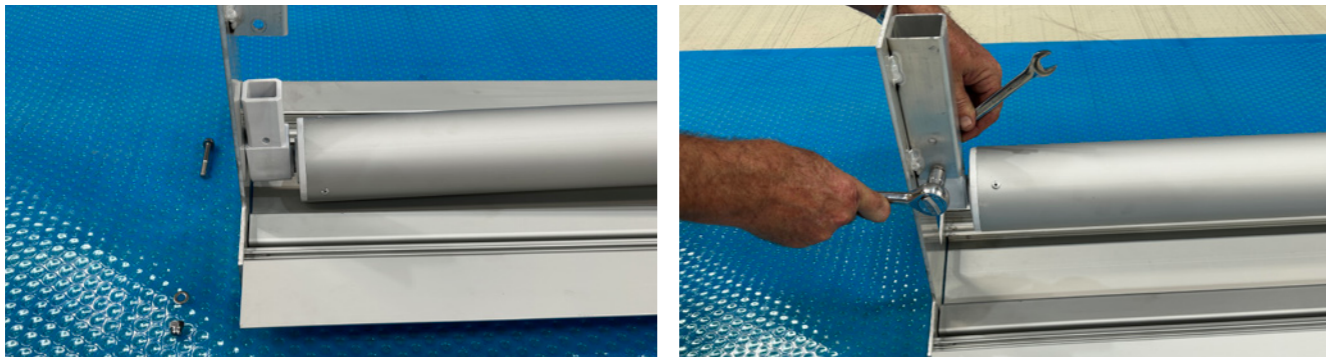


## INSTALLATION CONTINUED

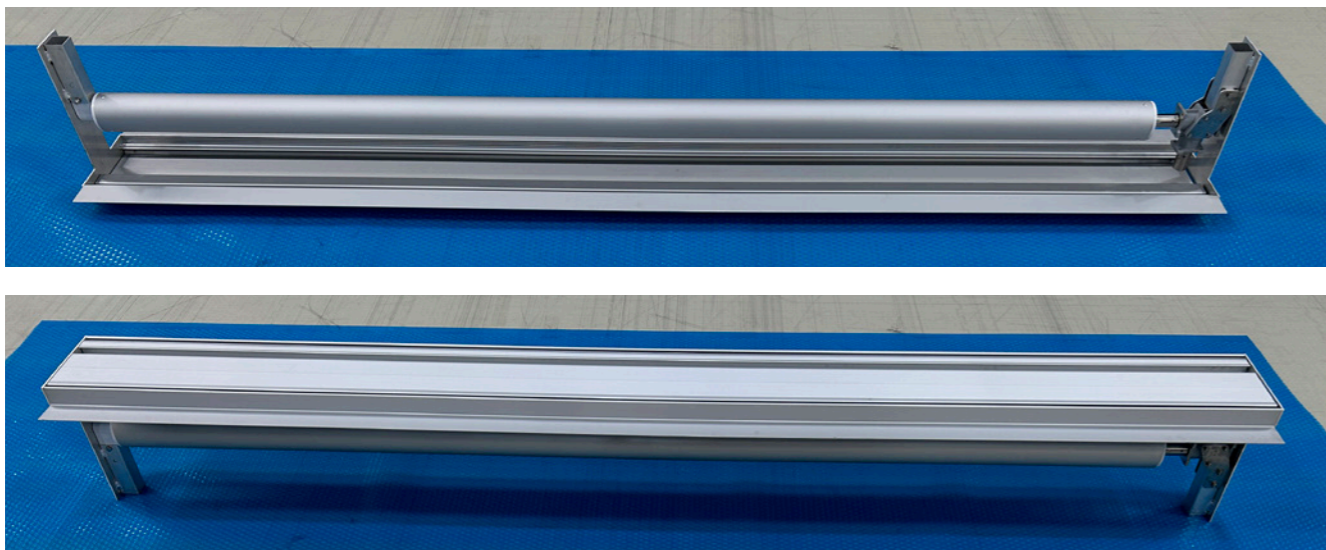
9. Insert the end slug into coupling then line up the hole, insert the bolt and tighten.



10. Lift the slave end and insert into the tube. Insert the mounting bolt then tighten.



11. The DMR build is complete & ready to turn over for install.



## OPERATION

### To operate the roller

- To Recover: Insert handle drive into socket, then rotate handle to recover pool cover all the way into the unit. Place handle inside unit, close lid.
- To Deploy: Remove handle from unit so it does not damage the pool cover, then take hold of one side of the pool cover and gently walk down the length of the pool.

### Note:

- Always roll the cover 'over' the tube never 'under' the tube
- If there is any obstruction on the cover it will make the roller harder to use. Stop and check to avoid damaging the pool cover.

### Pool Cover installation for Deck Mounted Rollers

Install the pool cover to maximum water line size then test the operation of the DMR. The pavers over the edge of the pool can catch the sides of the pool cover acting like a brake. This is of no concern for normal above ground rollers as the roller is picking up, or pulling the cover up and out of the pool. With the DMR, the cover is being pulled along the ground, meaning the edges are being pulled into the corners not out of them.

Square pools and pools with non-round paving generally will 'grab' the cover more.

To fix the problem, simply trim the pool cover narrower (to the coping opening size).

### Regular maintenance

- Ensure lid is clear of debris, sand and dirt to avoid scratching the lid if people walk over it
- Check all mounting bolts are secure
- Check all coupling bolts are secure
- Apply smear of marine grade grease to gearbox shafts





## WARRANTY

### Register Your Warranty Online

Because your Daisy can last for so many years, register your warranty online at Daisy. We'll keep all your details safe so you don't have to!

#### Two easy steps:

1. Scan your purchase receipt. Ensure the date of purchase is clearly visible.
2. Go to our website, and click on Warranty Registration. Fill in the details and send!

**Please staple your purchase receipt to this page.**

**Register online now at [daisypoolcovers.com.au](https://daisypoolcovers.com.au)**

We rarely get a warranty claim but just in case anything goes wrong we're here to help you.

All Daisy products come with a pro-rata warranty which covers the purchaser for defective materials or workmanship on a pro-rata basis.

The manufacturer will repair or replace the product upon inspection or photo image. Daisy reserves the right to refuse repeat claims of the same damage. This warranty may be void if the purchaser fails to comply with the manufactures install instructions.

Retain your proof of purchase for warranty coverage or register your warranty online.

Failure to follow the installation steps correctly, or excessive compacting around the box when installed, may result in crushing of the box front and/or back walls that will make the lid hard or unable to open.

Repairing or fixing the lid (due to it being unable to open due to the installation techniques) is not covered under the warranty.

5 Year Structural Warranty does not cover scratches or chips to the powder coating colour or finished surfaces

**AUSTRALIA'S FAVOURITE.**

1300 55 18 11 • [hello@daisypoolcovers.com.au](mailto:hello@daisypoolcovers.com.au)  
[daisypoolcovers.com.au](https://daisypoolcovers.com.au)

Quality | Technology | Service

