



daisy  
pool covers & rollers

# 24-25

## Expert's Yearbook

Including 2024-25 prices\*

**AUSTRALIA'S FAVOURITE.**

1300 55 18 11 • [daisypoolcovers.com.au](http://daisypoolcovers.com.au)

Quality | Technology | Service    

\*Recommended Retail Prices (inc. GST) Effective October 1 2024





# CONTENTS

<b>Cover Range</b>	<i>For different jobs</i>	<b>4</b>
Solar Pool Covers		5
ThermoTech Foam Insulation Covers		6
WinterKleen Leaf Covers		6
<b>Roller Range</b>	<i>Rollers designed for every pool</i>	<b>7</b>
Roller Range - 5 Star 75mm + 100mm		8
Roller Range - 5 Star 125mm		9
Roller Range - UTC		9
Electric Rollers - Daisy Power		10
Under Bench Rollers	<i>UBR</i>	11
Below Ground Pool Cover Box	<i>BGB</i>	12
Deck Mount Rollers	<i>DMR</i>	13
<b>The Acoustic Box</b>		<b>14-17</b>
<b>Commercial Range</b>		<b>18-22</b>
<b>Price Lists</b>		<b>23</b>
250 Price Grid	<i>250B</i>	24
400 Price Grid	<i>400B</i>	24
350 Price Grid	<i>350i</i>	25
525 Price Grid	<i>525</i>	25
ThemoTech Thermal Foam Price Grid	<i>TT</i>	26
WinterKleen Price Grid	<i>WK</i>	27
WinterKap Price Grid	<i>WKAG</i>	28
Spa Foam	<i>Budget Spa Foam Cover</i>	28
<b>How to Measure a WinterKleen</b>		<b>29</b>
<b>Roller Parts &amp; Accessories</b>		<b>31</b>
<b>Roller Dimensions</b>		<b>32</b>
<b>Restock, Warranty, Freight, Installation Policy</b>		<b>33</b>
<b>How to Buy a Daisy</b>		<b>34-35</b>
<b>Pool Cover &amp; Roller Order Form</b>	<i>Just fill it in and Email</i>	<b>36</b>



## Dear Daisy Customers,

We hope you enjoy the 2024/25 Expert's Year Book!

We've detailed our Australian-made product range and have included a comprehensive price list for the upcoming year.

We are incredibly grateful for all of our wonderful customers and your continued support over the years. We strive where possible to keep our costs down to ensure you receive the best prices for our products. That said, there have been some factors such as inflation, cost of utilities, labour and transport that have caused some costs to increase through our manufacturing and logistics supply chain.

Price increases have only been applied to products directly affected by a rise in costs.

This Year Book comes into effect on October 1st. We'd like to thank you for your cooperation and understanding and look forward to continuing our supply of Australia's leading pool covers and rollers.

## Exciting Acquisition

At Daisy, we are committed to extending our product range while continuing to develop and enhance the quality of our pool covers, rollers and accessories. We recently shared the news of our acquisition of The Acoustic Box, soundproof enclosures that are easily assembled around your pool pump and filter.

The Acoustic Box range is your answer to a quiet poolside environment, reducing the noise of your pool equipment by up to 80%. Available in over 300 sizes and a range of colour options, the soundproof enclosures are designed for optimal internal space with a lift-top lid and removable panel that makes hard-to-reach areas accessible. Neatening your pool area, The Acoustic Box keeps your pump and filter hidden from view, prolonging its lifespan by shielding equipment from the harsh Australian climate.

The acquisition marks an exciting milestone in our growth as we continue to deliver and install trusted, Australian-made products that are designed to stand the test of time.

Our product range meets the diverse needs of homeowners, builders, and commercial clients. From state-of-the-art pool covers and rollers to cutting-edge pump & filter soundproofing solutions, customers can expect unparalleled quality, performance, and durability across our entire product line.

If you would like more information on The Acoustic Box, or our pool covers and rollers, get in touch with our friendly team on 1300 55 18 11.

## Placing an order?

Placing and managing your order has never been easier. Our Dealer Portal offers trade customers easy access to our product range, where prices, delivery and order details can be accessed in just a few clicks.

Going beyond order management, our Dealer Portal contains a suite of up-to-date videos, designed to educate you on our entire product range and position you as the pool area experts to your customers. Learn detailed product information, correct installation methods as well as top tricks to enhance your sales.

To set up a login on our Dealer Portal, contact Daisy HQ at [hello@daisypoolcovers.com.au](mailto:hello@daisypoolcovers.com.au) to set up an account.

On behalf of the whole team at Daisy, we'd like to express our gratitude for your continued support and are dedicated to providing you with our knowledge and expertise to help you achieve your business goals.

Kind regards,

Derek Prince

Managing Director



# **COVER RANGE**

---

# SOLAR POOL COVER RANGE

## IDEAL FOR: Outdoor pools

Heat your water with the sun | Insulate and save heat loss | Stop evaporation

The most popular and easy to use is the Solar Pool Cover. These are bubble-style covers that let the sun heat your pool water by up to 8°C and retain heat by insulating your pool overnight.

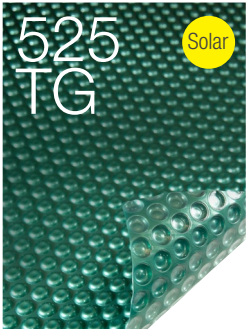
The natural heating and insulating saves you energy while also stopping evaporation.

These covers are perfect to use on all pools, especially when the sun hits the cover, helping you gain maximum benefits.

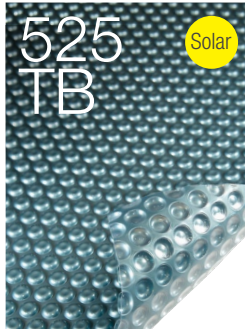
Pool size price grid see page 24/25.



**525B**  
Solar pool cover  
Translucent Blue  
10 Year pro rata warranty  
525 micron  
Most Popular  
\$23.05m<sup>2</sup> inc. GST



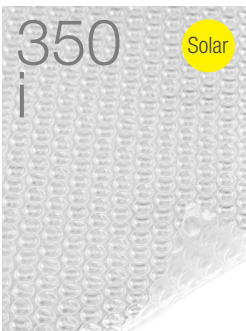
**525TG**  
Solar pool cover  
Titanium Green  
10 Year pro rata warranty  
525 micron  
\$23.05m<sup>2</sup> inc. GST



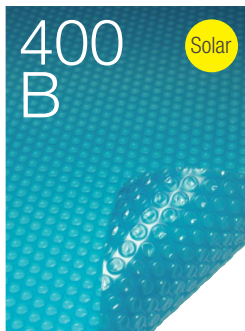
**525TB**  
Solar pool cover  
Titanium Blue  
10 Year pro rata warranty  
525 micron  
\$23.05m<sup>2</sup> inc. GST



**525TC**  
Solar pool cover  
Titanium Cool  
10 Year pro rata warranty  
525 micron  
Non Heating  
\$23.05m<sup>2</sup> inc. GST



**350i**  
Solar pool cover  
Natural to the colour of your pool  
5 Year pro rata warranty  
350 micron  
\$16.95m<sup>2</sup> inc. GST

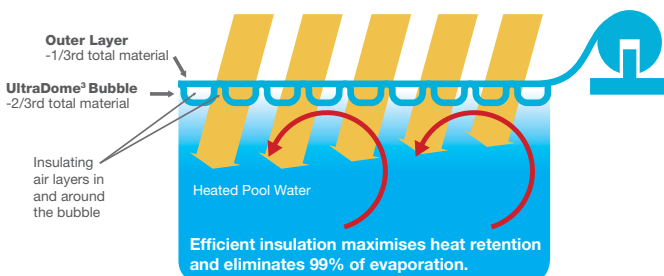


**400B**  
Solar pool cover  
Translucent Blue  
5 Year pro rata warranty  
400 micron  
Mid Range  
\$18.65m<sup>2</sup> inc. GST



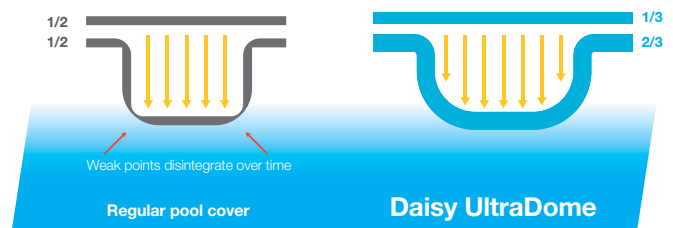
**250B**  
Solar pool cover  
Translucent Blue  
3 Year pro rata warranty  
250 micron  
Budget  
\$12.75m<sup>2</sup> inc. GST

## REDUCE THE COST OF MAINTAINING A WARM SUSTAINABLE POOL.



## THE DAISY DIFFERENCE

The bubble is the same thickness throughout for greater strength and longer life



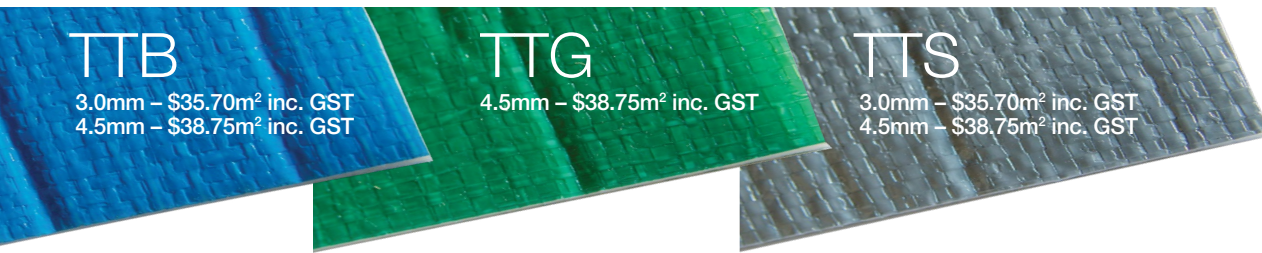
## BENEFITS OF A DAISY SOLAR POOL COVER

- SAVE** on water,  
up to 10,000L  
per month.  
Improves water  
retention.
- SAVE** on  
chemicals.  
Reduce salt and  
chemical use by  
up to 50%.
- SAVE** money.  
Higher quality.  
Better design.  
Lasts longer.
- STOP**  
evaporation.  
Reduces  
evaporation  
by 99%.
- SAVE** on  
cleaning.  
Helps keep out  
dirt and leaves.
- SAVE** on time.  
Rolls off and on in  
30 seconds.
- SAVE** on  
heat loss.  
Reduced heating  
costs and  
heat loss.
- Warms** your  
pool by up to  
8°C for free.
- Australian  
Made.**

# THERMOTECH FOAM INSULATION COVER

## IDEAL FOR: Pools that don't see the sun

High insulating cover | Great for indoor pools | Save on heating costs | 8 Year pro rata warranty | 3.0mm or 4.5mm



**TTB**

3.0mm – \$35.70m<sup>2</sup> inc. GST  
4.5mm – \$38.75m<sup>2</sup> inc. GST

**TTG**

4.5mm – \$38.75m<sup>2</sup> inc. GST

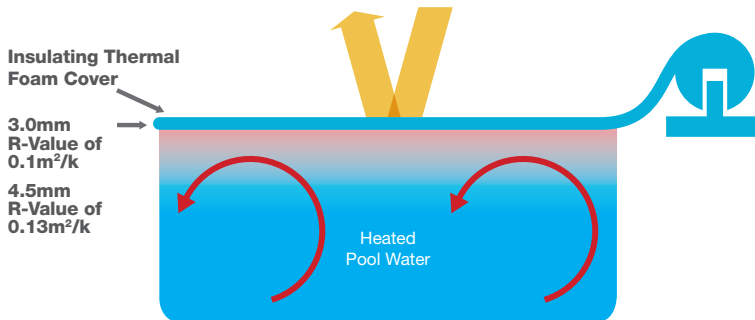
**TTS**

3.0mm – \$35.70m<sup>2</sup> inc. GST  
4.5mm – \$38.75m<sup>2</sup> inc. GST

The ThermoTech™ range is a high insulating cover ideal for both indoor and outdoor pools that primarily want to retain heat and reduce the energy costs of heating a pool with an external heat source, i.e. a heat pump, allowing you to save on energy costs and stop evaporation.

Available in 3.0mm or the premium 4.5mm, these covers are great in cooler climates where heat loading is greater, and are generally used indoor and overnight.

**Pool size price grid see page 26.**



## BENEFITS OF A THERMOTECH FOAM INSULATION COVER



**SAVE** on heat loss.  
Reduced heating costs and heat loss.



**SAVE** on water, up to 10,000L per month.  
Improves water retention.



**SAVE** on cleaning.  
Helps keep out dirt and leaves.



**SAVE** money.  
Higher quality. Better design. Lasts longer.



**SAVE** on chemicals.  
Reduce salt and chemical use by up to 50%.



**SAVE** on time.  
Rolls off and on in 30 seconds.



**STOP** evaporation.  
Reduces evaporation by 99%.



Australian Made.

# WINTERKLEEN LEAF COVER

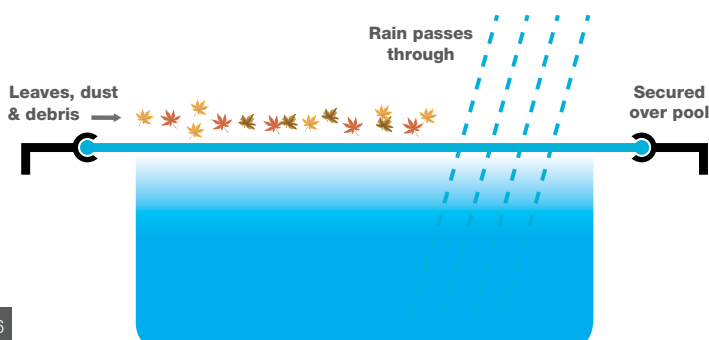
## IDEAL FOR: Pools with high debris

Mesh cover saves cleaning time | Great for windy or leafy areas | 8 Year pro rata warranty



WinterKleen pool covers are the ideal choice for pools that experience excess garden and leaf debris. These pool covers are installed over your pool so that any debris that falls onto the cover collects, blows off or is easily swept away. Water passes through but debris and dust stay out. WinterKleen covers work well in conjunction with a Solar Pool Cover to use during the off-season. Reducing evaporation and saving cleaning time, these covers are ideal for pools that have a high debris load.

**Pool size price grid see page 27.**



## BENEFITS OF A WINTERKLEEN LEAF COVER



**SAVE** on cleaning.  
Keep out dirt and leaves.



**SAVE** on time.



**SAVE** on evaporation.  
Reduces evaporation by 80%.



Australian Made.



# **ROLLER RANGE**



# ROLLER RANGE - 5 STAR

## 100mm Roller Range for most backyard pools

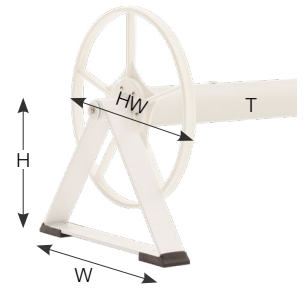
All Rollers supplied with over cover and pool cover connection kit.  
\$30 premium for non standard fixed length rollers to be manufactured.

**DIY Roller Range:** 2.5m universal tube assemblies with pre drilled & marked for standard tube sizes.  
Easy install with stainless screws. DIY over covers for max tube length supplied.

**Colour Options:** For models that have colour options, default code for white option

Black Range: Add BK to code - A75BK(size) - STBK(size) - MKIIBK(size)

Grey Range: Add GY to code - A75GY(size) - STGY(size) - MKIIGY(size)



**A75 Stationary**  
5 star quality – small to medium pools  
10 Year pro rata warranty  
H 260mm W 420mm T 75mm HW 375mm

Code	Tube (m)	Pool size	Price
A7534	3.4	3.1 x 12.0	\$614.00
A7537	3.7	3.4 x 12.0	
A7540	4.0	3.7 x 12.0	
A7543	4.3	4.0 x 12.0	
A7546	4.6	4.3 x 12.0	
A75DIYS	Universal to 4.6		\$556.00
A10049	4.9	4.6 x 12.0	\$733.00
A10052	5.2	4.9 x 12.0	
A10055	5.5	5.2 x 12.0	
A10058	5.8	5.5 x 12.0	
A100DIYL	Universal to 5.8		



**SQ Squat**  
5 star quality – small to large pools  
10 Year pro rata warranty  
H 195mm W 430mm T 100mm HW 375mm

Code	Tube (m)	Pool size	Price	
SQ40	4.0	3.7 x 12.0	\$670.00	
SQ43	4.3	4.0 x 12.0		
SQ46	4.6	4.3 x 12.0		
SQDIYS	Universal to 4.6			\$607.00
SQ49	4.9	4.6 x 12.0		
SQ52	5.2	4.9 x 12.0	\$763.00	
SQ55	5.5	5.2 x 10.0		
SQ58	5.8	5.5 x 10.0		
SQDIYL	Universal to 5.8		\$668.00	



**ST Stationary**  
5 star quality – medium to large pools  
10 Year pro rata warranty  
H 395mm W 485mm T 100mm HW 375mm

Code	Tube (m)	Pool size	Price	
ST40	4.0	3.7 x 18.0	\$735.00	
ST43	4.3	4.0 x 18.0		
ST46	4.6	4.3 x 18.0		
STDIYS	Universal to 4.6			\$666.00
ST49	4.9	4.6 x 18.0		
ST52	5.2	4.9 x 18.0	\$829.00	
ST55	5.5	5.2 x 14.0		
ST58	5.8	5.5 x 14.0		
ST61	6.1	5.8 x 14.0		
ST64	6.4	6.1 x 14.0		
STDIYL	Universal to 6.4		\$727.00	



**MKII Directional Mobile**  
5 star quality – medium to large pools  
10 Year pro rata warranty  
H 395mm W 570mm T 100mm HW 375mm

Code	Tube (m)	Pool size	Price	
MKII40	4.0	3.7 x 18.0	\$760.00	
MKII43	4.3	4.0 x 18.0		
MKII46	4.6	4.3 x 18.0		
MKIIDIYS	Universal to 4.6			\$690.00
MKII49	4.9	4.6 x 18.0		
MKII52	5.2	4.9 x 18.0	\$861.00	
MKII55	5.5	5.2 x 14.0		
MKII 58	5.8	5.5 x 14.0		
MKII61	6.1	5.8 x 14.0		
MKII 64	6.4	6.1 x 14.0		
MKIIDIYL	Universal to 6.4		\$754.00	



**LP Low Profile - Fully Mobile**  
5 star quality – medium to large pools  
10 Year pro rata warranty  
H 240mm W 485mm T 100mm HW 375mm

Code	Tube (m)	Pool size	Price	
LP40	4.0	3.7 x 13.0	\$838.00	
LP43	4.3	4.0 x 13.0		
LP46	4.6	4.3 x 13.0		
LPDIYS	Universal to 4.6			\$759.00
LP49	4.9	4.6 x 13.0		
LP52	5.2	4.9 x 13.0	\$930.00	
LP55	5.5	5.2 x 10.0		
LP58	5.8	5.5 x 10.0		
LP61	6.1	5.8 x 10.0		
LP64	6.4	6.1 x 10.0		
LPDIYL	Universal to 6.4		\$819.00	



**FM Fully Mobile**  
5 star quality – medium to large pools  
10 Year pro rata warranty  
H 395mm W 570mm T 100mm HW 375mm

Code	Tube (m)	Pool size	Price	
FM40	4.0	3.7 x 18.0	\$858.00	
FM43	4.3	4.0 x 18.0		
FM46	4.6	4.3 x 18.0		
FMDIYS	Universal to 4.6			\$779.00
FM49	4.9	4.6 x 18.0		
FM52	5.2	4.9 x 18.0	\$951.00	
FM55	5.5	5.2 x 14.0		
FM58	5.8	5.5 x 14.0		
FM61	6.1	5.8 x 14.0		
FM64	6.4	6.1 x 14.0		
FMDIYL	Universal to 6.4		\$840.00	



**AGA Above Ground Adjustable**  
5 star quality – medium pools  
10 Year pro rata warranty  
H 930mm to 1530mm W 1060mm T 100mm HW 375mm

Code	Tube (m)	Pool size	Price	
AGA40	4.0	3.7 x 18.0	\$1,126.00	
AGA43	4.3	4.0 x 18.0		
AGA46	4.6	4.3 x 18.0		
AGADIYS	Universal to 4.6			\$1,021.00
AGA49	4.9	4.6 x 18.0		
AGA52	5.2	4.9 x 18.0	\$1,211.00	
AGA55	5.5	5.2 x 14.0		
AGA58	5.8	5.5 x 14.0		
AGA61	6.1	5.8 x 14.0		
AGA64	6.4	6.1 x 14.0		
AGADIYL	Universal to 6.4		\$1,071.00	



**316ST Marine grade, SAE 316 Stainless Steel**  
5 star quality – medium to large pools  
10 Year pro rata warranty  
H 395mm W 485mm T 100mm HW 375mm

Code	Tube (m)	Pool size	Retail Price	
316ST40	4.0	3.7 x 18.0	\$1,048.00	
316ST43	4.3	4.0 x 18.0		
316ST46	4.6	4.3 x 18.0		
316STDIYS	Universal to 4.6			\$950.00
316ST49	4.9	4.6 x 18.0		
316ST52	5.2	4.9 x 18.0	\$1,143.00	
316ST55	5.5	5.2 x 14.0		
316ST58	5.8	5.5 x 14.0		
316ST61	6.1	5.8 x 14.0		
316ST64	6.4	6.1 x 14.0		
316STDIYL	Universal to 6.4		\$1,012.00	

## Extras



**ASTS** Adjustable ST frame short #236  
**\$265.07** to make roller heights – 345-395-445-495-545mm.

**ASTL** Adjustable ST frame long #237  
**\$271.61** to make roller heights – 595-645-695-745mm.

*\*Price for 1 frame to adjust roller leg on uneven ground.*



**EM** Roller end mount #235 **\$148.32**  
wall mount kit to support one end of a 100mm roller.





## 125mm Roller Range for longer wider pools

Note: All rollers are supplied with over cover and cover connection kit. \$25 premium for non standard size fixed length rollers to be manufactured.



**125ST Stationary**  
5 star quality – for longer wider pools  
10 Year pro rata warranty  
H 395mm W 485mm T 125mm HW 375mm

Code	Tube (m)	Pool size	Price
125ST40	4.0	3.7 x 20.0	\$1,109.00
125ST43	4.3	4.0 x 20.0	
125ST46	4.6	4.3 x 20.0	
125ST49	4.9	4.6 x 20.0	
125ST52	5.2	4.9 x 20.0	\$1,220.00
125ST55	5.5	5.2 x 18.0	
125ST58	5.8	5.5 x 18.0	
125ST61	6.1	5.8 x 18.0	
125ST64	6.4	6.1 x 18.0	\$1,359.00
125ST67	6.7	6.4 x 18.0	
125ST70	7.0	6.7 x 18.0	



**125FM Fully Mobile**  
5 star quality – for longer wider pools  
10 Year pro rata warranty  
H 395mm W 570mm T 125mm HW 375mm

Code	Tube (m)	Pool size	Price
125FM40	4.0	3.7 x 20.0	\$1,136.00
125FM43	4.3	4.0 x 20.0	
125FM46	4.6	4.3 x 20.0	
125FM49	4.9	4.6 x 20.0	
125FM52	5.2	4.9 x 20.0	\$1,254.00
125FM55	5.5	5.2 x 18.0	
125FM58	5.8	5.5 x 18.0	
125FM61	6.1	5.8 x 18.0	
125FM64	6.4	6.1 x 18.0	\$1,397.00
125FM67	6.7	6.4 x 18.0	
125FM70	7.0	6.7 x 18.0	



**125MAXI Fully Mobile**  
5 star quality – for longer wider pools  
10 Year pro rata warranty  
H 700mm W 710mm T 125mm HW 375mm

Code	Tube (m)	Pool size	Price
MAXI40	4.0	3.7 x 20.0	\$1,845.00
MAXI43	4.3	4.0 x 20.0	
MAXI46	4.6	4.3 x 20.0	
MAXI49	4.9	4.6 x 20.0	
MAXI52	5.2	4.9 x 20.0	\$1,964.00
MAXI55	5.5	5.2 x 18.0	
MAXI58	5.8	5.5 x 18.0	
MAXI61	6.1	5.8 x 18.0	
MAXI64	6.4	6.1 x 18.0	\$2,106.00
MAXI67	6.7	6.4 x 18.0	
MAXI70	7.0	6.7 x 18.0	

## Crank Handle Option

Supplied with one crank handle, no hand wheels.

Note: all rollers are supplied with over cover and cover connection kit.



**A75 Stationary**  
5 star quality – small to medium pools  
10 Year pro rata warranty  
H 260mm W 420mm T 75mm CR 225mm

Code	Tube (m)	Pool size	Price
A75C34	3.4	3.1 x 12.0	\$614.00
A75C37	3.7	3.4 x 12.0	
A75C40	4.0	3.7 x 12.0	
A75C43	4.3	4.0 x 12.0	
A75C46	4.6	4.3 x 12.0	\$556.00
A75CDIYS	Universal to 4.6		
A100C49	4.9	4.6 x 12.0	
A100C52	5.2	4.9 x 12.0	
A100C55	5.5	5.2 x 12.0	\$733.00
A100C58	5.8	5.5 x 12.0	
A100CDIYL	Universal to 5.8		
			\$625.00



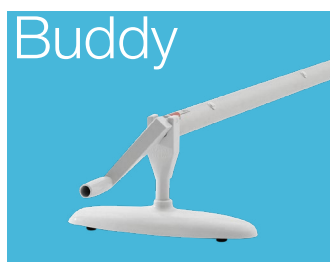
**ST Stationary**  
5 star quality – medium to large pools  
10 Year pro rata warranty  
H 395mm W 485mm T 100mm CR 225mm

Code	Tube (m)	Pool size	Price
STC40	4.0	3.7 x 18.0	\$735.00
STC43	4.3	4.0 x 18.0	
STC46	4.6	4.3 x 18.0	
STCDIYS	Universal to 4.6		
STC49	4.9	4.6 x 18.0	\$666.00
STC52	5.2	4.9 x 18.0	
STC55	5.5	5.2 x 14.0	
STC58	5.8	5.5 x 14.0	
STC61	6.1	5.8 x 14.0	\$829.00
STC64	6.4	6.1 x 14.0	
STCDIYL	Universal to 6.4		
			\$727.00

## UTC

### Budget Range

Note: All rollers are supplied with over cover and cover connection kit.



**Buddy50**  
Small pools  
5 Year pro rata warranty  
H 205mm W 400mm T 50mm

Code	Tube	Pool size	Price
BB50	Universal	3.6 x 7.3	\$303.00

**Buddy75**  
Medium pools  
5 Year pro rata warranty  
H 205mm W 400mm T 75mm

Code	Tube	Pool size	Price
BB75	Universal	4.2 x 8.0	\$374.00



**UTC75**  
Medium pools  
5 Year pro rata warranty  
H 310mm W 400mm T 75mm HW 375

Code	Tube	Pool size	Price
UTC75	Universal	4.4 x 12.0	\$455.00

**UTC100**  
Medium to large pools  
5 Year pro rata warranty  
H 310mm W 400mm T 100mm HW 375

Code	Tube	Pool size	Price
UTC100	Universal	6.1 x 15.0	\$559.00



**UTCAG50**  
Above ground pools  
5 Year pro rata warranty  
H 75mm W 200mm T 50mm

Code	Tube	Pool size	Price
UTAG50	Universal	4.0 x 8.0	\$303.00

**UTCAG75**  
Above ground pools  
5 Year pro rata warranty  
H 75mm W 200mm T 75mm

Code	Tube	Pool size	Price
UTAG75	Universal	4.4 x 12.0	\$374.00

# DAISY POWER

- ✓ Daisy power electric rollers
- ✓ Retro kits available
- ✓ Battery powered AC charge
- + solar models



## ELECTRIC ROLLERS

The standard Daisy Power roller comes as a 12V battery operated electric roller with AC charger, two remotes and control buttons on the cast aluminium housing mounted on the end frame.

Daisy Power has a disengage mechanism, which allows for freewheeling rollout and rollup of the cover, and is a feature unique to Daisy.

Daisy Power can be retrofitted onto most existing 100mm Daisy Rollers.

Warranty period on electrical components (remote/control housing/tube motor/AC charger) is 2 years (this warranty does not cover battery failure). All mechanical parts 10 year pro rata warranty.

Suitable for pools up to 15m.

### Daisy Power SQ - Squat Profile



Code	Tube Length (m)	Price NO Solar Panel	Add Solar Panel	
			Code (add to roller code)	Price With Solar Panel
DPSQ1251	Retro Kit - No Tube	\$1,264.25 <sup>^</sup>	DPPV1260	\$1,457.05 <sup>^</sup>
DPSQ40	4.0	\$1,663.25 <sup>^</sup>	DPPV1260	\$1,856.05 <sup>^</sup>
DPSQ43	4.3		DPPV1260	
DPSQ46	4.6		DPPV1260	
DPSQDIYS	Universal to 4.6	\$1,530.75 <sup>^</sup>	DPPV1260	\$1,723.55 <sup>^</sup>
DPSQ49	4.9	\$1,738.40 <sup>^</sup>	DPPV1260	\$1,931.20 <sup>^</sup>
DPSQ52	5.2		DPPV1260	
DPSQ55	5.5		DPPV1260	
DPSQ58	5.8		DPPV1260	
DPSQ61	6.1		DPPV1260	
DPSQ64	6.4		DPPV1260	
DPSQDIYL	Universal to 6.4	\$1,586.65 <sup>^</sup>	DPPV1260	\$1,799.45 <sup>^</sup>

### Daisy Power ST - Stationary



Code	Tube Length (m)	Price NO Solar Panel	Add Solar Panel	
			Code (add to roller code)	Price With Solar Panel
DPST1250	Retro Kit - No Tube	\$1,264.25 <sup>^</sup>	DPPV1260	\$1,457.05 <sup>^</sup>
DPST40	4.0	\$1,663.25 <sup>^</sup>	DPPV1260	\$1,856.05 <sup>^</sup>
DPST43	4.3		DPPV1260	
DPST46	4.6		DPPV1260	
DPSTDIYS	Universal to 4.6	\$1,530.75 <sup>^</sup>	DPPV1260	\$1,723.55 <sup>^</sup>
DPST49	4.9	\$1,738.40 <sup>^</sup>	DPPV1260	\$1,931.20 <sup>^</sup>
DPST52	5.2		DPPV1260	
DPST55	5.5		DPPV1260	
DPST58	5.8		DPPV1260	
DPST61	6.1		DPPV1260	
DPST64	6.4		DPPV1260	
DPSTDIYL	Universal to 6.4	\$1,586.65 <sup>^</sup>	DPPV1260	\$1,779.45 <sup>^</sup>

### Daisy Power WM - Wall Mount



Code	Tube Length (m)	Price NO Solar Panel	Add Solar Panel	
			Code (add to roller code)	Price With Solar Panel
DPWM1255	Retro Kit - No Tube	\$1,331.50 <sup>^</sup>	DPPV1260	\$1,524.30 <sup>^</sup>
DPWM40	4.0	\$1,750.20 <sup>^</sup>	DPPV1260	\$1,943.00 <sup>^</sup>
DPWM43	4.3		DPPV1260	
DPWM46	4.6		DPPV1260	
DPWMDIYS	Universal to 4.6	\$1,615.65 <sup>^</sup>	DPPV1260	\$1,808.45 <sup>^</sup>
DPWM49	4.9	\$1,820.05 <sup>^</sup>	DPPV1260	\$2,012.85 <sup>^</sup>
DPWM52	5.2		DPPV1260	
DPWM55	5.5		DPPV1260	
DPWM58	5.8		DPPV1260	
DPWM61	6.1		DPPV1260	
DPWM64	6.4		DPPV1260	
DPWMDIYL	Universal to 6.4	\$1,664.30 <sup>^</sup>	DPPV1260	\$1,857.10 <sup>^</sup>

### Daisy Power Parts

Code	Description	Recommended Retail Price
DPPV1260	Solar Panel Kit to clamp to drive motor end frame and plug into control housing to maintain battery power	\$192.80 <sup>^</sup>
DPPOST1262	Post to clamp solar panel to if the power end of the roller is in shade or under cover. (Point end to drive into the ground)	\$141.35 <sup>^</sup>
1215	5m Charge Cable Extension	\$43.95 <sup>^</sup>
1205	AC Charger - 3m	\$47.85 <sup>^</sup>
1314	PCB	\$278.40 <sup>^</sup>
1290	Remote Control	\$22.65 <sup>^</sup>
1305	Control housing	\$744.07 <sup>^</sup>
1300	Tube Motor Assembly	\$607.16 <sup>^</sup>
1309	Battery	\$138.69 <sup>^</sup>

For information on Commercial solutions, please contact the Daisy team today.

<sup>^</sup>See Page 33



# UBR: UNDER BENCH ROLLER

Front row seating that's stylish and energised!

A pool roller with a difference! The Under Bench Roller (UBR) combines practicality with style by giving you extra poolside seating while keeping the pool roller from view.

All models can be fitted with a solar powered battery option.

- Full aluminium frame and seating with stainless steel hardware
- Seating planks: 2 x 250mm wide planks
- Seating end caps: powder coated cast aluminium
- Power option 12V with solar panel, AC charger, two remotes, tube disengage and mounted control button

- Fully welded and powder coated round aluminium 40mm tubing frame
- Stainless steel anchors
- Small sizes (up to 2.8m pool width) have 1 x C frame support in the middle; large sizes have 2 x C frame supports in the middle
- Manual version able to hold 20m of the Daisy solar pool cover
- Power version able to hold up to 15m of the Daisy solar pool cover
- 10 year pro rata warranty\*
- Custom made to any pool size.

\*Scratches and chips not covered. Power model 2 year limited warranty.



## Clear Anodised

Clear Anodised			Standard UBR		Power Version	
Pool Width	Tube Length	Seat Length	Code	Price	Code	Price
2.0	2.2	2.45	UBRCA245	\$1,670.00*	DPUBRCA245	\$3,163.00*
2.5	2.7	2.95	UBRCA295		DPUBRCA295	
2.8	3.0	3.25	UBRCA325		DPUBRCA325	
3.0	3.25	3.5	UBRCA35	\$2,265.00*	DPUBRCA35	\$3,770.00*
3.5	3.75	4.0	UBRCA40		DPUBRCA40	
4.0	4.25	4.5	UBRCA45		DPUBRCA45	
4.5	4.75	5.0	UBRCA50	\$2,265.00*	DPUBRCA50	\$3,770.00*
5.0	5.25	5.5	UBRCA55		DPUBRCA55	
5.5	5.75	6.0	UBRCA60		DPUBRCA60	
6.0	6.25	6.5	UBRCA65		DPUBRCA65	



## Charcoal Shimmer

Charcoal Shimmer			Standard UBR		Power Version	
Pool Width	Tube Length	Seat Length	Code	Price	Code	Price
2.0	2.2	2.45	UBRCS245	\$2,076.00*	DPUBRCS245	\$3,582.00*
2.5	2.7	2.95	UBRCS295		DPUBRCS295	
2.8	3.0	3.25	UBRCS325		DPUBRCS325	
3.0	3.25	3.5	UBRCS35	\$2,903.00*	DPUBRCS35	\$4,410.00*
3.5	3.75	4.0	UBRCS40		DPUBRCS40	
4.0	4.25	4.5	UBRCS45		DPUBRCS45	
4.5	4.75	5.0	UBRCS50	\$2,903.00*	DPUBRCS50	\$4,410.00*
5.0	5.25	5.5	UBRCS55		DPUBRCS55	
5.5	5.75	6.0	UBRCS60		DPUBRCS60	
6.0	6.25	6.5	UBRCS65		DPUBRCS65	



## Light Oak

Light Oak			Standard UBR		Power Version	
Pool Width	Tube Length	Seat Length	Code	Price	Code	Price
2.0	2.2	2.45	UBRLO245	\$2,076.00*	DPUBRLO245	\$3,582.00*
2.5	2.7	2.95	UBRLO295		DPUBRLO295	
2.8	3.0	3.25	UBRLO325		DPUBRLO325	
3.0	3.25	3.5	UBRLO35	\$2,903.00*	DPUBRLO35	\$4,410.00*
3.5	3.75	4.0	UBRLO40		DPUBRLO40	
4.0	4.25	4.5	UBRLO45		DPUBRLO45	
4.5	4.75	5.0	UBRLO50	\$2,903.00*	DPUBRLO50	\$4,410.00*
5.0	5.25	5.5	UBRLO55		DPUBRLO55	
5.5	5.75	6.0	UBRLO60		DPUBRLO60	
6.0	6.25	6.5	UBRLO65		DPUBRLO65	



## Western Red Cedar

Western Red Cedar			Standard UBR		Power Version	
Pool Width	Tube Length	Seat Length	Code	Price	Code	Price
2.0	2.2	2.45	UBRWRC245	\$2,076.00*	DPUBRWRC245	\$3,582.00*
2.5	2.7	2.95	UBRWRC295		DPUBRWRC295	
2.8	3.0	3.25	UBRWRC325		DPUBRWRC325	
3.0	3.25	3.5	UBRWRC35	\$2,903.00*	DPUBRWRC35	\$4,410.00*
3.5	3.75	4.0	UBRWRC40		DPUBRWRC40	
4.0	4.25	4.5	UBRWRC45		DPUBRWRC45	
4.5	4.75	5.0	UBRWRC50	\$2,903.00*	DPUBRWRC50	\$4,410.00*
5.0	5.25	5.5	UBRWRC55		DPUBRWRC55	
5.5	5.75	6.0	UBRWRC60		DPUBRWRC60	
6.0	6.25	6.5	UBRWRC65		DPUBRWRC65	

# BGB: BELOW GROUND POOL COVER BOX

A very popular product, the Below Ground Pool Cover Boxes are suitable for backyards that have limited space. These are a full aluminium constructed box with anodized aluminum lids. Heavy duty braces are fitted to reinforce the structural integrity of the box. Our boxes will save you money not only in protecting your pool cover, giving it longevity but also by enhancing your pool area, adding value to your home.

With Daisy Below Ground Boxes, the power is now in your hands with the latest time-saving accessory - BGB Drill Drive #1425. Find out more below.

- Quality boxes are fitted flush to the paving or concrete height - hidden to enhance the aesthetic look of your pool area
- Slimline lid opening
- Manual roller with sealed 3:1 gearbox and 1.4m handle included
- Single person operation
- Versatile: can be installed to suit most new and existing pools
- Installation only available in selected areas
- 5 year structural warranty for your peace of mind

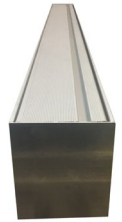
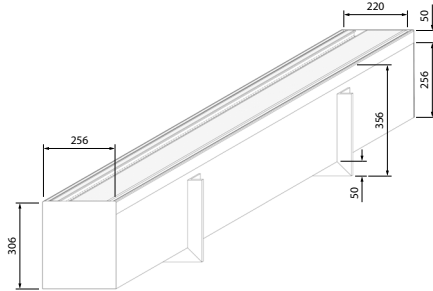
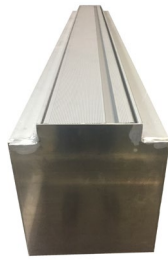
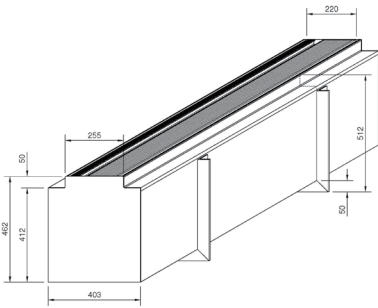
## Manual option pricing

BGB		Max length ThermoTech 14m Max length 525 20m Single layer	
Pool width	BGB Size	Code	RRP
up to 2.5m	3.0m	BGB30	\$4,375.00 <sup>^</sup>
2.55 to 3.0m	3.5m	BGB35	\$4,720.00 <sup>^</sup>
3.05 to 3.5m	4.0m	BGB40	\$4,945.00 <sup>^</sup>
3.55 to 4.0m	4.5m	BGB45	\$5,170.00 <sup>^</sup>
4.05 to 4.5m	5.0m	BGB50	\$5,285.00 <sup>^</sup>
4.55 to 5.0m	5.5m	BGB55	\$5,400.00 <sup>^</sup>
5.05 to 5.5m	6.0m	BGB60	\$5,630.00 <sup>^</sup>

BGBSMall		Max length ThermoTech 7m Max length 525 9m Single layer	
Pool width	BGB Size	Code	RRP
up to 2.5m	3.0m	BGBSM30	\$3,927.00 <sup>^</sup>
2.55 to 3.0m	3.5m	BGBSM35	\$4,040.00 <sup>^</sup>
3.05 to 3.5m	4.0m	BGBSM40	\$4,268.00 <sup>^</sup>
3.55 to 4.0m	4.5m	BGBSM45	\$4,475.00 <sup>^</sup>

Custom Cut Down to size \$825<sup>^</sup>  
Standard Freight Metro \$147<sup>^</sup> Non Metro \$325.50<sup>^</sup>

Custom Cut Down to size \$825<sup>^</sup>  
Standard Freight Metro \$191.10<sup>^</sup> Non Metro \$431.55<sup>^</sup>



Installation guide download <https://daisypoolcovers.com.au/resources/>

## BGB Drill Drive

Code: #1425 (drill not included)  
\$494.70<sup>^</sup>

Daisy's super convenient invention allows you to wind up your BGB with a standard power drill. Simply use the extension arm and turn on your drill. Your Daisy Pool Cover will quickly and easily wind into the BGB.

This auto-roller option means no more manual winding. Even better, you can do it all without the hassle of connecting power to your BGB. That's the power of Daisy innovation.



# DMR: DECK MOUNT ROLLER

These boxes will not only save you money by protecting your pool cover and giving it longevity, but they also enhance the look of your pool area, adding value to your home. Our units are full aluminium with anodised aluminium lids. Heavy duty braces are fitted to reinforce the structural integrity of the unit.

- Quality units are fitted flush to the decking or paving height – hidden to enhance the aesthetic look of your pool area
- Slimline lid opening
- Single person operation
- Versatile: can be installed to suit most new and existing pool, deck or bricked up cavities
- Note: pool cover must be installed to waterline maximum width, see FAQ
- 5 year structural warranty for your peace of mind

Depending on install clearance max length ThermoTech 13m

Max length 525 15m

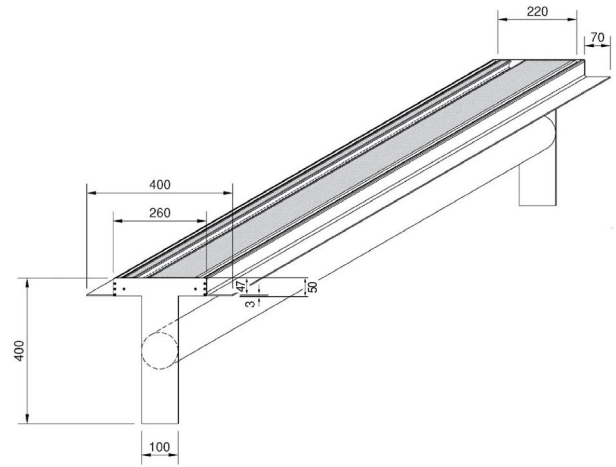
Single layer

## DMR Deck Mount Roller

Pool width	DMR Size	Code	RRP
up to 2.5m	3.0m	DMR30	\$2,065.00 <sup>^</sup>
2.55 to 3.0m	3.5m	DMR35	\$2,358.00 <sup>^</sup>
3.05 to 3.5m	4.0m	DMR40	\$2,358.00 <sup>^</sup>
3.55 to 4.0m	4.5m	DMR45	\$2,358.00 <sup>^</sup>
4.05 to 4.5m	5.0m	DMR50	\$2,358.00 <sup>^</sup>
4.55 to 5.0m	5.5m	DMR55	\$2,743.00 <sup>^</sup>
5.05 to 5.5m	6.0m	DMR60	\$2,743.00 <sup>^</sup>

Custom Cut Down to size \$250<sup>^</sup>

Freight Metro \$115.50\* - Non Metro \$262.50\*



## Pit Mount Roller Kit

Code	RRP
PMR46	\$861.90 <sup>^</sup>
PMR60	\$1,118.94 <sup>^</sup>

Kit of roller and drive to mount underground for installations where customer has built lid and or pit structure. Supplied with DIY tube.

<sup>^</sup>See Page 33

# Soundproof Pump & Filter Enclosures



Money Back  
 Guarantee



Child Safety  
 Features



Easy To  
 Assemble



Reduce Noise  
 By 80%



Gas Strut  
 Opening Lid



Removable  
 Front Panel



Offer more  
 internal space  
 for easier access



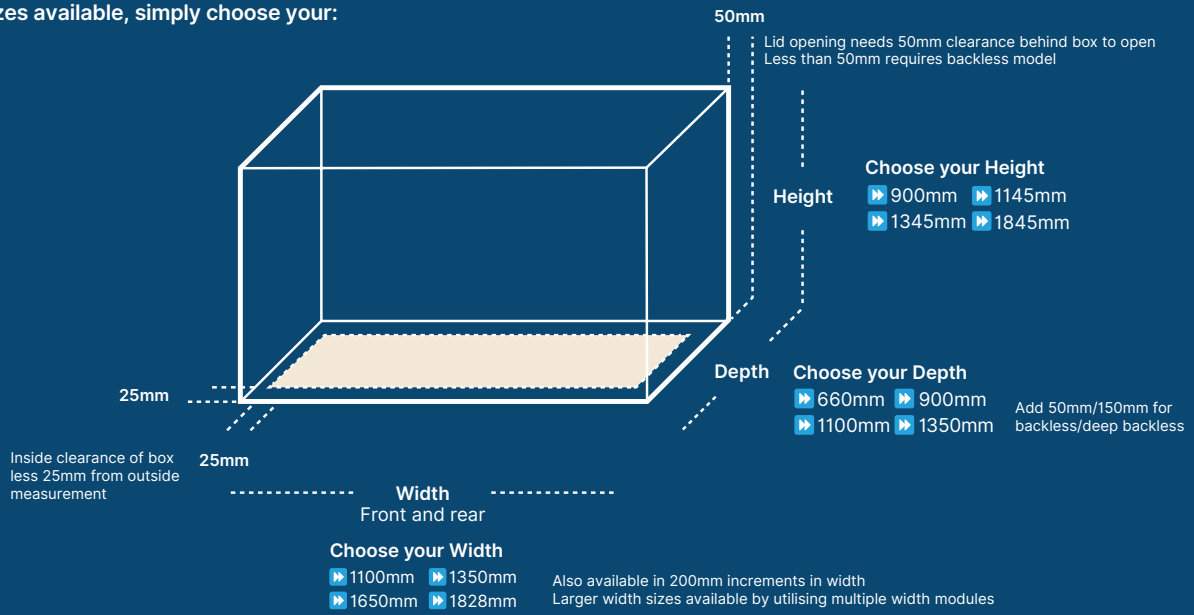
100% Australian  
 Made & Designed



## Standard Models.

Over 300 sizes available, simply choose your:

1. Width
2. Depth
3. Height
4. Colour



## Footings, Custom Boxes And Deliveries

- ▶ Treated timber footings available cut to size and ready to assemble
- ▶ Ventilated solutions available to accommodate gas and electric pool heaters
- ▶ Custom colours on request – no additional lead time
- ▶ Boxes with side access and extra timber panels
- ▶ Custom tailored solutions to suit any level site
- ▶ Deliveries to all cities and regional towns

## Available Colours



# Standard Models

Over 300 Sizes Available



 1300 787 089

All Enclosures come in Free Standing or two types of 'BACKLESS' configurations to mount to the wall. Free Standing enclosure includes a rear panel with wooden insert to mount equipment, providing a fully enclosed structure. Backless enclosures utilise two wall strips to connect the enclosure to the wall, with a horizontal bridge attached to the top of the wall strips to ensure the system is fully enclosed. These wall strips are to be attached to the wall. 'Backless' or 'Deep Backless' models add 50mm or 150mm to the depth at no additional cost.

Model	Width External (Internal) (mm)	Depth External (Internal) (mm)	Height External (Internal) (mm)	Retail Price (Inc GST)
110609	1100 (1050)	660 (610)	900 (855)	\$2034-
110611	1100 (1050)	660 (610)	1145 (1100)	\$2034-
110613	1100 (1050)	660 (610)	1345 (1300)	\$2254-
110909	1100 (1050)	900 (850)	900 (855)	\$2034-
110911	1100 (1050)	900 (850)	1145 (1100)	\$2034-
110913	1100 (1050)	900 (850)	1345 (1300)	\$2254-
110918	1100 (1050)	900 (850)	1845 (1800)	\$3189-
111109	1100 (1050)	1100 (1050)	900 (855)	\$2034-
111111	1100 (1050)	1100 (1050)	1145 (1100)	\$2034-
111113	1100 (1050)	1100 (1050)	1345 (1300)	\$2254-
111118	1100 (1050)	1100 (1050)	1845 (1800)	\$3189-
111311	1100 (1050)	1350 (1300)	1145 (1100)	\$2254-
111313	1100 (1050)	1350 (1300)	1345 (1300)	\$2584-
130609	1350 (1300)	660 (610)	900 (855)	\$2254-
130611	1350 (1300)	660 (610)	1145 (1100)	\$2254-
130613	1350 (1300)	660 (610)	1345 (1300)	\$2584-
130909	1350 (1300)	900 (850)	900 (855)	\$2254-
130911	1350 (1300)	900 (850)	1145 (1100)	\$2254-
130913	1350 (1300)	900 (850)	1345 (1300)	\$2584-
130918	1350 (1300)	900 (850)	1845 (1800)	\$3574-
131109	1350 (1300)	1100 (1050)	900 (855)	\$2254-
131111	1350 (1300)	1100 (1050)	1145 (1100)	\$2254-
131113	1350 (1300)	1100 (1050)	1345 (1300)	\$2584-
131118	1350 (1300)	1100 (1050)	1845 (1800)	\$3574-
131309	1350 (1300)	1350 (1300)	900 (855)	\$2584-
131311	1350 (1300)	1350 (1300)	1145 (1100)	\$2584-
131313	1350 (1300)	1350 (1300)	1345 (1300)	\$2804-
160609	1650 (1600)	660 (610)	900 (855)	\$2364-
160611	1650 (1600)	660 (610)	1145 (1100)	\$2364-
160613	1650 (1600)	660 (610)	1345 (1300)	\$2694-
160909	1650 (1600)	900 (850)	900 (855)	\$2364-
160911	1650 (1600)	900 (850)	1145 (1100)	\$2364-
160913	1650 (1600)	900 (850)	1345 (1300)	\$2694-
160918	1650 (1600)	900 (850)	1845 (1800)	\$3574-
161109	1650 (1600)	1100 (1050)	900 (855)	\$2364-
161111	1650 (1600)	1100 (1050)	1145 (1100)	\$2364-
161113	1650 (1600)	1100 (1050)	1345 (1300)	\$2694-
161118	1650 (1600)	1100 (1050)	1845 (1800)	\$3574-
161309	1650 (1600)	1350 (1300)	900 (855)	\$2804-
161311	1650 (1600)	1350 (1300)	1145 (1100)	\$2804-
161313	1650 (1600)	1350 (1300)	1345 (1300)	\$3024-
161611	1650 (1600)	1650 (1600)	1145 (1100)	\$3024-
161613	1650 (1600)	1650 (1600)	1345 (1300)	\$3244-



Model	Width External (Internal) (mm)	Depth External (Internal) (mm)	Height External (Internal) (mm)	Retail Price (Inc GST)
220609	2228 (2178)	660 (610)	900 (855)	\$3024-
220611	2228 (2178)	660 (610)	1145 (1100)	\$3024-
220613	2228 (2178)	660 (610)	1345 (1300)	\$3464-
220909	2228 (2178)	900 (850)	900 (855)	\$3024-
220911	2228 (2178)	900 (850)	1145 (1100)	\$3024-
220913	2228 (2178)	900 (850)	1345 (1300)	\$3464-
220918	2228 (2178)	900 (850)	1845 (1800)	\$4014-
221109	2228 (2178)	1100 (1050)	900 (855)	\$3024-
221111	2228 (2178)	1100 (1050)	1145 (1100)	\$3024-
221113	2228 (2178)	1100 (1050)	1345 (1300)	\$3464-
221309	2228 (2178)	1350 (1300)	900 (855)	\$3464-
221311	2228 (2178)	1350 (1300)	1145 (1100)	\$3464-
221313	2228 (2178)	1350 (1300)	1345 (1300)	\$3794-
221118	2228 (2178)	1100 (1050)	1845 (1800)	\$4014-
Pump Box – Standard Pump Box	850 (810)	330 (275)	380 (360)	\$935 -
Pump Box – Long	1020 (980)	330 (275)	380 (360)	\$935 -
Pump Box – Short	680 (640)	330 (275)	380 (360)	\$935 -

## Optional Extras

Installation <small>(Syd, Mel, Bris, Gold Coast)</small>	Regular installation – carried out by a qualified Pool Tech and includes core drilling panels to allow for pipes in / out of enclosure	From:	\$435*
Site inspection <small>(Syd, Mel, Bris, Gold Coast)</small>	Site visit to confirm measurements & suitable size	From:	\$88* - \$165*
Footings	H3 treated timber, cut to the size of the enclosure (45mm D and 90mm H)		\$182 -
Side access (<1400mm H)	Additional access on either side (no gas strut on side-access side)		\$329 -
Side access (>1400mm H)	Additional access on either side (no gas strut on side-access side)		\$439 -
Louvered door	Louvered door (in lieu of standard door) for additional ventilation		\$219 -
Grilled panel	A panel with a grill for additional ventilation (required when covering heaters / other types of compressors)		\$219 -
Grilled door	A door with a grill for additional ventilation (required when covering heaters / other types of compressors)		\$186 -
Flue Kit	For enclosing gas heaters		\$435 -
Levelling feet	Adjustable feet to increase box height by up to 30mm (8 pieces)		\$54 -
Extra Timber	Additional dressed timber board on side panel		\$87 -
Custom Colour	Non-standard Colour (Dulux powder coat range only)		\$296 -
Acid Feeder Box	For enclosing 15L acid drums (600mm W x 400mm D x 400mm H)		\$655 -



Acid Feeder Box



Flue Kit



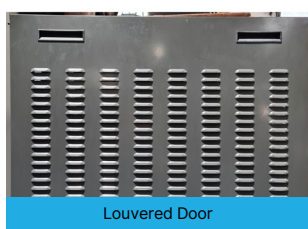
Footings



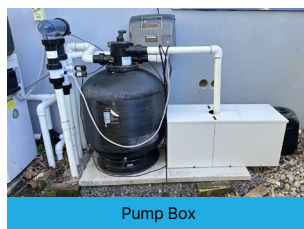
Grilled panel



Levelling feet



Louvered Door



Pump Box



Side access

## Delivery

	To nearest depot **	Door-to-door
Sydney Metro	N/A	\$121*
Brisbane metro; SE QLD; Northern NSW	\$138	\$275*
Melbourne Metro	\$138	\$275*
Adelaide metro	\$198	\$330*
Perth Metro	\$220	\$385*
Other areas / Interstate & Regional	POA	POA*



# COMMERCIAL



# COMMERCIAL COVERS AND ROLLERS

Daisy is Australia's largest supplier of pool covers and rollers to the commercial industry. We have been in the pool cover industry for over 40 years.

Our commercial products have the strength and durability to withstand the harsh climate and conditions that an Australian public swimming pool is exposed to.

Our service, expertise and product design and quality produce cost reductions that are multiplied with commercial purchases.

If your operation is considering the cost saving benefits of a Daisy pool cover and roller system, **contact us by phone or email [commercial@daisypoolcovers.com.au](mailto:commercial@daisypoolcovers.com.au)**

**See the Commercial section on [daisypoolcovers.com.au](http://daisypoolcovers.com.au)**



## Be water wise

Save over 200,000 litres of water per month (50m pool)



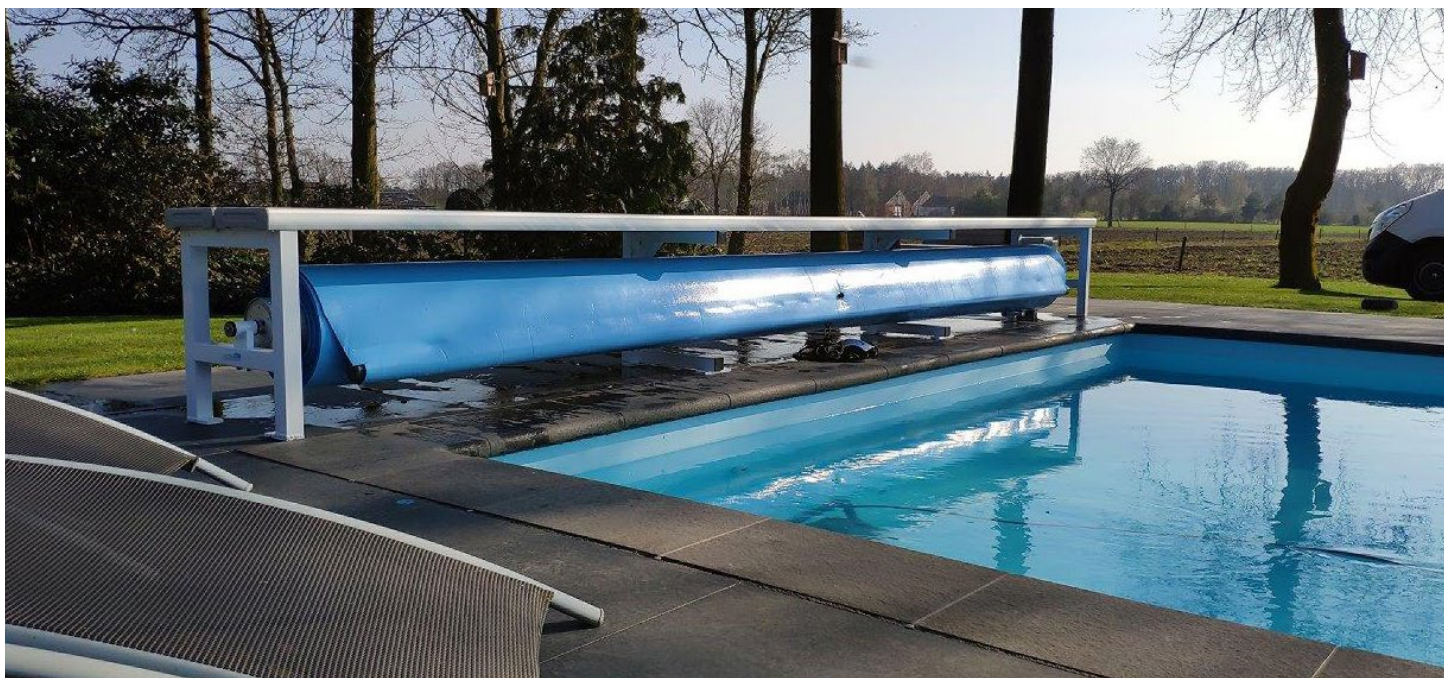
## Be energy wise

Save 30-40% energy cost



## Be money wise

Daisy will pay for itself in 12 months



# DAISY COMMERCIAL COVERS

Our Commercial Pool Cover range includes our two market-leading products:

1. The **525 Solar Cover** using our patented UltraDome™ Technology delivering best-in-class thermal efficiency, unparalleled performance and longevity in the life of the pool cover; and
2. The **ThermoTech™ Thermal Foam Cover**, a 4.5mm thick, cross linked PE closed cell Polyethylene foam pool cover.

Daisy pool covers and roller systems save on a large scale:

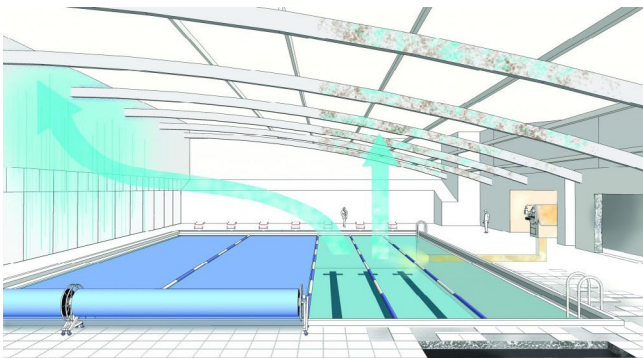
1. Saves pool warmth and reduces heating costs by 30-40%
2. Saves on cleaning costs
3. Saves on the cost of chemicals and retains chlorine
4. Reduces evaporation by 99.98%  
In practical terms this means you stop water loss when the pool cover is on the water.

**Mean Daily Evaporation Rate (in mm) for the October to March 6 month daily average from The Bureau of Meteorology**

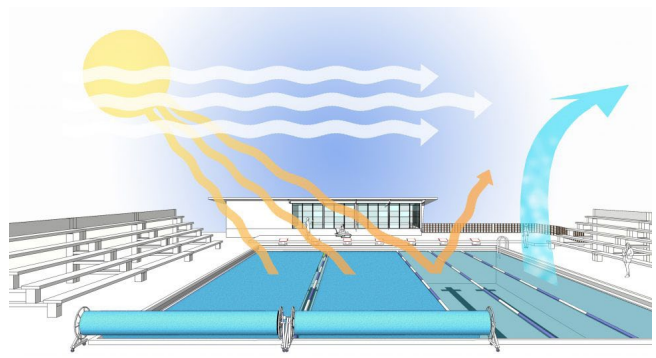
Sydney	Melbourne	Brisbane	Adelaide	Perth
6.4mm	6.4mm	6.9mm	7.4mm	8.3mm

Example: 50m x 20m outdoor pool in Brisbane loses 207,000 litres of water in a 30 day period in summer due to evaporation

5. Reduces building maintenance, corrosion and condensation in indoor heated pools
6. Extends the swimming season
7. A Daisy will pay for itself in 12 months



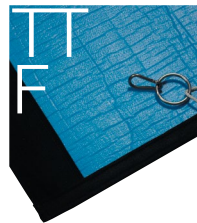
Indoor Pool Evaporation



Outdoor Pool Evaporation



**525B**  
Solar pool cover  
Translucent Blue  
5 Year pro rata warranty  
525 micron  
Most Effective

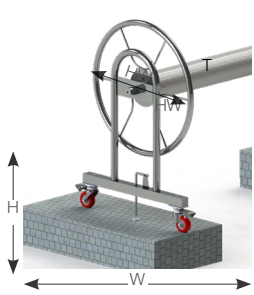


**ThermoTech**  
Foam  
Insulation Cover  
Blue Opaque  
5 Year pro rata warranty  
4.5mm  
Heated and Indoor



# DAISY COMMERCIAL ROLLERS

Daisy Commercial is the problem solver for large and commercial swimming pools. No matter the pool you have the Daisy Commercial team will work with you to find a customised solution that will best suit your business and environment.

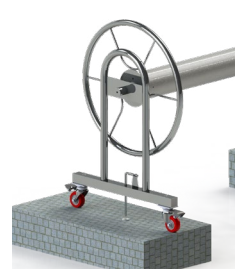


## U125

U125 Commercial  
Stainless Steel (316) "U" Frame  
700mm Stainless Steel Handwheel  
125mm x 2.0mm Tube

H 660mm W 605mm T 125mm HW 700

Code	Tube	Pool size	Price
U125SMB7S	upto 5.2	4.9 x 25.0	\$2,620.00*
U125SMB7L	upto 7.0	6.7 x 20.0	\$2,745.00*

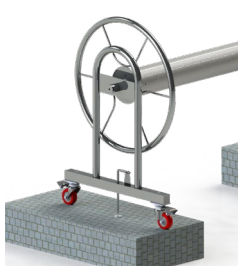


## U150

U150 Commercial  
Stainless Steel (316) "U" Frame  
700mm Stainless Steel Handwheel  
152mm x 2.0mm Tube

H 660mm W 605mm T 152mm HW 700

Code	Tube	Pool size	Price
U150SMB9S	upto 5.2	4.9 x 50.0	\$2,910.00*
U150SMB9L	upto 7.0	6.7 x 25.0	\$3,060.00*



## U203

U203 Commercial  
Stainless Steel (316) "U" Frame  
900mm Stainless Steel Handwheel  
203mm x 3.0mm Tube

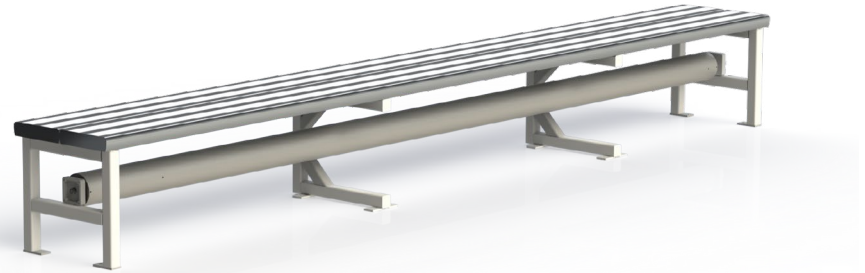
H 738mm W 985mm T 203mm HW 900

Code	Tube	Pool size	Price
U203SMB9S	upto 5.2	4.9 x 50.0	\$4,105.00*
U203SMB9L	upto 7.0	6.7 x 50.0	\$4,395.00*

## Caddy Pro



## Under Bench Rollers



## Wall Mounted Rollers



\*See Page 33

# THE EXTRA MILE IN QUALITY AND SERVICE

Over the years, Daisy has covered a lot of pools, refining our processes to make it easier to order, install and use Daisy products. We've also added services, products and finishes providing greater flexibility, and go the extra mile in quality and service.

Contact Daisy Pool Covers for any of your Commercial needs.

Service	Cost	per:
Pre Cut (robotic cut for fibreglass pools)	\$71.50*	each
Custom Pre Cut (special measurements)	\$99.00*	each
Wind Skirt per metre	\$26.50^	per lineal metre
Edge Binding (black woven edging)	\$17.50^	per lineal metre
Edge Binding (coloured PVC edging)	\$17.50^	per lineal metre
Float rod, harness haulcord	\$455.00^	each
Dig Template – (up to 7m pool)	\$64.70*	each
Dig Template – (7.1 to 10m pool)	\$75.00*	each
Dig Template – (10.1m + pool)	\$85.50*	each
Caddy Pro	\$12,316.50^	each

Minimum charges: \$250 (RRP).



Robotic Pre-Cut



Foam cover with step cut out



Foam reinforced roller end (commercial)



Spa cover with PVC coloured edging (commercial)



Foam edge bound



Caddy Pro driving under bench roller



# PRICE LISTS







**\$38.75** per m<sup>2</sup>

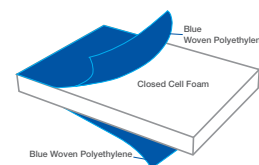
Cover width (finished size)

Length	2m	2.5m	3m	3.5m	4m	4.5m	5m	5.5m	6m	6.5m	Length
2.4	\$186.00	\$232.50	\$279.00	\$325.50	\$372.00	\$418.50	\$465.00	\$511.50	\$558.00	\$604.50	2.4
2.7	\$209.25	\$261.56	\$313.88	\$366.19	\$418.50	\$470.81	\$523.13	\$575.44	\$627.75	\$680.06	2.7
3	\$232.50	\$290.63	\$348.75	\$406.88	\$465.00	\$523.13	\$581.25	\$639.38	\$697.50	\$755.63	3
3.3	\$255.75	\$319.69	\$383.63	\$447.56	\$511.50	\$575.44	\$639.38	\$703.31	\$767.25	\$831.19	3.3
3.6	\$279.00	\$348.75	\$418.50	\$488.25	\$558.00	\$627.75	\$697.50	\$767.25	\$837.00	\$906.75	3.6
3.9	\$302.25	\$377.81	\$453.38	\$528.94	\$604.50	\$680.06	\$755.63	\$831.19	\$906.75	\$982.31	3.9
4.2	\$325.50	\$406.88	\$488.25	\$569.63	\$651.00	\$732.38	\$813.75	\$895.13	\$976.50	\$1,057.88	4.2
4.5	\$348.75	\$435.94	\$523.13	\$610.31	\$697.50	\$784.69	\$871.88	\$959.06	\$1,046.25	\$1,133.44	4.5
4.8	\$372.00	\$465.00	\$558.00	\$651.00	\$744.00	\$837.00	\$930.00	\$1,023.00	\$1,116.00	\$1,209.00	4.8
5.1	\$395.25	\$494.06	\$592.88	\$691.69	\$790.50	\$889.31	\$988.13	\$1,086.94	\$1,185.75	\$1,284.56	5.1
5.4	\$418.50	\$523.13	\$627.75	\$732.38	\$837.00	\$941.63	\$1,046.25	\$1,150.88	\$1,255.50	\$1,360.13	5.4
5.7	\$441.75	\$552.19	\$662.63	\$773.06	\$883.50	\$993.94	\$1,104.38	\$1,214.81	\$1,325.25	\$1,435.69	5.7
6.1	\$472.75	\$590.94	\$709.13	\$827.31	\$945.50	\$1,063.69	\$1,181.88	\$1,300.06	\$1,418.25	\$1,536.44	6.1
6.4	\$496.00	\$620.00	\$744.00	\$868.00	\$992.00	\$1,116.00	\$1,240.00	\$1,364.00	\$1,488.00	\$1,612.00	6.4
6.7	\$519.25	\$649.06	\$778.88	\$908.69	\$1,038.50	\$1,168.31	\$1,298.13	\$1,427.94	\$1,557.75	\$1,687.56	6.7
7	\$542.50	\$678.13	\$813.75	\$949.38	\$1,085.00	\$1,220.63	\$1,356.25	\$1,491.88	\$1,627.50	\$1,763.13	7
7.3	\$565.75	\$707.19	\$848.63	\$990.06	\$1,131.50	\$1,272.94	\$1,414.38	\$1,555.81	\$1,697.25	\$1,838.69	7.3
7.6	\$589.00	\$736.25	\$883.50	\$1,030.75	\$1,178.00	\$1,325.25	\$1,472.50	\$1,619.75	\$1,767.00	\$1,914.25	7.6
7.9	\$612.25	\$765.31	\$918.38	\$1,071.44	\$1,224.50	\$1,377.56	\$1,530.63	\$1,683.69	\$1,836.75	\$1,989.81	7.9
8.2	\$635.50	\$794.38	\$953.25	\$1,112.13	\$1,271.00	\$1,429.88	\$1,588.75	\$1,747.63	\$1,906.50	\$2,065.38	8.2
8.5	\$658.75	\$823.44	\$988.13	\$1,152.81	\$1,317.50	\$1,482.19	\$1,646.88	\$1,811.56	\$1,976.25	\$2,140.94	8.5
8.8	\$682.00	\$852.50	\$1,023.00	\$1,193.50	\$1,364.00	\$1,534.50	\$1,705.00	\$1,875.50	\$2,046.00	\$2,216.50	8.8
9.1	\$705.25	\$881.56	\$1,057.88	\$1,234.19	\$1,410.50	\$1,586.81	\$1,763.13	\$1,939.44	\$2,115.75	\$2,292.06	9.1
9.4	\$728.50	\$910.63	\$1,092.75	\$1,274.88	\$1,457.00	\$1,639.13	\$1,821.25	\$2,003.38	\$2,185.50	\$2,367.63	9.4
9.7	\$751.75	\$939.69	\$1,127.63	\$1,315.56	\$1,503.50	\$1,691.44	\$1,879.38	\$2,067.31	\$2,255.25	\$2,443.19	9.7
10	\$775.00	\$968.75	\$1,162.50	\$1,356.25	\$1,550.00	\$1,743.75	\$1,937.50	\$2,131.25	\$2,325.00	\$2,518.75	10
10.3	\$798.25	\$997.81	\$1,197.38	\$1,396.94	\$1,596.50	\$1,796.06	\$1,995.63	\$2,195.19	\$2,394.75	\$2,594.31	10.3
10.6	\$821.50	\$1,026.88	\$1,232.25	\$1,437.63	\$1,643.00	\$1,848.38	\$2,053.75	\$2,259.13	\$2,464.50	\$2,669.88	10.6
10.9	\$844.75	\$1,055.94	\$1,267.13	\$1,478.31	\$1,689.50	\$1,900.69	\$2,111.88	\$2,323.06	\$2,534.25	\$2,745.44	10.9
11.2	\$868.00	\$1,085.00	\$1,302.00	\$1,519.00	\$1,736.00	\$1,953.00	\$2,170.00	\$2,387.00	\$2,604.00	\$2,821.00	11.2
11.5	\$891.25	\$1,114.06	\$1,336.88	\$1,559.69	\$1,782.50	\$2,005.31	\$2,228.13	\$2,450.94	\$2,673.75	\$2,896.56	11.5
11.9	\$922.25	\$1,152.81	\$1,383.38	\$1,613.94	\$1,844.50	\$2,075.06	\$2,305.63	\$2,536.19	\$2,766.75	\$2,997.31	11.9
12.2	\$945.50	\$1,181.88	\$1,418.25	\$1,654.63	\$1,891.00	\$2,127.38	\$2,363.75	\$2,600.13	\$2,836.50	\$3,072.88	12.2
Length	2m	2.5m	3m	3.5m	4m	4.5m	5m	5.5m	6m	6.5m	Length

Insulating cover that does not heat the water. Ideal to assist keeping leaves and dirt out, stop evaporation and condensation without increasing water temperature.

4.5mm cross linked PE closed cell Polyethylene Foam. 3 layers, flame bonded both sides to UV stabilised, water proof, non toxic and chemical resistant blue woven PE.

All thermal foam covers are tape welded both sides. Step areas can be added by welding small rectangles on sides of the cover.



RRP Including GST. Please Note: Price Matrix is approx cover size. Allow for cover min 200mm larger all sides (200mm each end + each side = cover 400mm larger than pool).

BK

BL

GR

GY

TN

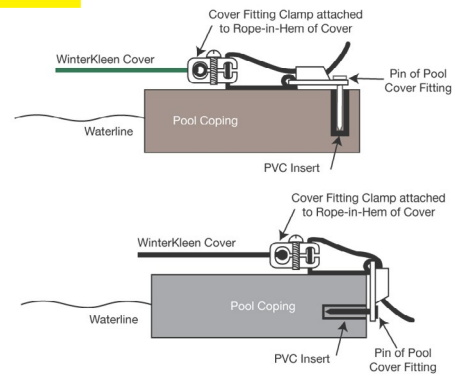
Cover width (finished size)

Length	1.6m	2.5m	3.4m	4.3m	5.2m	6.1m	7m	
2.5	\$318.48	\$363.31						2.5
3	\$382.18	\$435.98	\$494.70					3
3.5	\$445.87	\$508.64	\$577.15	\$638.42				3.5
4	\$509.57	\$581.30	\$659.60	\$729.62				4
4.5	\$573.26	\$653.96	\$742.05	\$820.83	896.45			4.5
5	\$636.96	\$726.63	\$824.50	\$912.03	996.06			5
5.5	\$700.66	\$799.29	\$906.95	\$1,003.23	\$1,095.67	\$1,199.08		5.5
6	\$764.35	\$871.95	\$989.40	\$1,094.44	\$1,195.27	\$1,308.08		6
6.5	\$828.05	\$944.61	\$1,071.85	\$1,185.64	\$1,294.88	\$1,417.09	\$1,521.07	6.5
7	\$891.74	\$1,017.28	\$1,154.30	\$1,276.84	\$1,394.48	\$1,526.10	\$1,638.07	7
7.5	\$955.44	\$1,089.94	\$1,236.75	\$1,368.05	\$1,494.09	\$1,635.11	\$1,755.08	7.5
8	\$1,019.14	\$1,162.60	\$1,319.20	\$1,459.25	\$1,593.70	\$1,744.11	\$1,872.08	8
8.5	\$1,082.83	\$1,235.26	\$1,401.65	\$1,550.45	\$1,693.30	\$1,853.12	\$1,989.09	8.5
9	\$1,146.53	\$1,307.93	\$1,484.10	\$1,641.65	\$1,792.91	\$1,962.13	\$2,106.09	9
9.5	\$1,210.22	\$1,380.59	\$1,566.55	\$1,732.86	\$1,892.51	\$2,071.13	\$2,223.10	9.5
10	\$1,273.92	\$1,453.25	\$1,649.00	\$1,824.06	\$1,992.12	\$2,180.14	\$2,340.10	10
10.5	\$1,337.62	\$1,525.91	\$1,731.45	\$1,915.26	\$2,091.73	\$2,289.15	\$2,457.11	10.5
11	\$1,401.31	\$1,598.58	\$1,813.90	\$2,006.47	\$2,191.33	\$2,398.15	\$2,574.11	11
11.5	\$1,465.01	\$1,671.24	\$1,896.35	\$2,097.67	\$2,290.94	\$2,507.16	\$2,691.12	11.5
12	\$1,528.70	\$1,743.90	\$1,978.80	\$2,188.87	\$2,390.54	\$2,616.17	\$2,808.12	12
12.5	\$1,592.40	\$1,816.56	\$2,061.25	\$2,280.08	\$2,490.15	\$2,725.18	\$2,925.13	12.5
13	\$1,656.10	\$1,889.23	\$2,143.70	\$2,371.28	\$2,589.76	\$2,834.18	\$3,042.13	13
13.5	\$1,719.79	\$1,961.89	\$2,226.15	\$2,462.48	\$2,689.36	\$2,943.19	\$3,159.14	13.5
14	\$1,783.49	\$2,034.55	\$2,308.60	\$2,553.68	\$2,788.97	\$3,052.20	\$3,276.14	14
14.5	\$1,847.18	\$2,107.21	\$2,391.05	\$2,644.89	\$2,888.57	\$3,161.20	\$3,393.15	14.5
15	\$1,910.88	\$2,179.88	\$2,473.50	\$2,736.09	\$2,988.18	\$3,270.21	\$3,510.15	15
15.5	\$1,974.58	\$2,252.54	\$2,555.95	\$2,827.29	\$3,087.79	\$3,379.22	\$3,627.16	15.5
Length	1.6m	2.5m	3.4m	4.3m	5.2m	6.1m	7m	
M <sup>2</sup> price by width	\$79.62	\$58.13	\$48.50	\$42.42	\$38.31	\$35.74	\$33.43	

## Fitting Set



19mm Spade drill bit required  
10mm Masonry drill bit supplied



Storage bag included

Daisy Float WT206 \$14.62 each

Float cord 25m (6mmPP to tie floats in place)  
#415 - \$13.03

Handrail cut outs - extra \$79.00\*

Sufficient fitting sets are supplied with every cover to be installed approx 800mm apart.

All covers are custom made so unfortunately we are unable to take any cover back for credit.

Minimum cover price - \$350

For step areas simply add step size to cover size.

Fitting Set \$9.74 - #138BK - Black, 138CR - Cream, 138TE - Terracotta

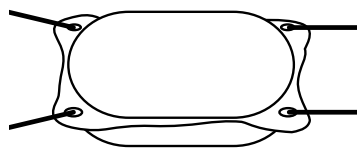
Standard ground insert only. \$1.12 Codes: 276 - Black, 420 - Cream, 419 - Terracotta

Deck fittings instead of normal in ground fitting + \$2.94 per fitting.

Codes: 435 - Black, 436 - Cream, 437 - Terracotta

Not suitable for empty pools.

For special shaped pools that can not be covered with rectangles, please see how to measure page 29 or our website.



Recommended retail install pricing guide.

Cover Size	Price
up to 20m <sup>2</sup> :	\$261.00*
21m <sup>2</sup> to 25m <sup>2</sup> :	\$323.00*
26m <sup>2</sup> to 35m <sup>2</sup> :	\$379.00*
36m <sup>2</sup> to 50m <sup>2</sup> :	\$457.00*
51m <sup>2</sup> to 60m <sup>2</sup> :	\$492.00*
61m <sup>2</sup> to 70m <sup>2</sup> :	\$575.00*
71m <sup>2</sup> +:	\$645.00*

Pool areas may have uneven surrounds or have hollows under the pavers or tiles. Installers cannot be liable for chipped surfaces or cracked pavers

\*See Page 33

# WKAG WINTERKAP WinterKleen for above ground pools

Top quality protection for above ground pools. Same material as WinterKleen (p27). Shock cord supplied to easily help keep WinterKap in place on above ground pools. 8 year pro rata warranty.

Note: Price is approx WinterKap finished size – normal cover size required is pool size + 400mm each side

Length	3.4m	4.3m	5.2m	6.1m	7m	
3.5	\$301.55					3.5
4	\$344.62					4
4.5	\$387.70	\$462.08				4.5
5	\$430.78	\$513.42				5
5.5	\$473.86	\$564.76	\$644.64			5.5
6	\$516.94	\$616.10	\$703.25	\$784.70		6
6.5	\$560.01	\$667.45	\$761.85	\$850.10		6.5
7	\$603.09	\$718.79	\$820.46	\$915.49	\$1,003.03	7
7.5	\$646.17	\$770.13	\$879.06	\$980.88	\$1,074.68	7.5
8	\$689.25	\$821.47	\$937.66	\$1,046.27	\$1,146.32	8
8.5	\$732.33	\$872.81	\$996.27	\$1,111.66	\$1,217.97	8.5
9	\$775.40	\$924.16	\$1,054.87	\$1,177.06	\$1,289.61	9
9.5	\$818.48	\$975.50	\$1,113.48	\$1,242.45	\$1,361.26	9.5
10	\$861.56	\$1,026.84	\$1,172.08	\$1,307.84	\$1,432.90	10
10.5	\$904.64	\$1,078.18	\$1,230.68	\$1,373.23	\$1,504.55	10.5
11	\$947.72	\$1,129.52	\$1,289.29	\$1,438.62	\$1,576.19	11
11.5	\$990.79	\$1,180.87	\$1,347.89	\$1,504.02	\$1,647.84	11.5
12	\$1,033.87	\$1,232.21	\$1,406.50	\$1,569.41	\$1,719.48	12
12.5	\$1,076.95	\$1,283.55	\$1,465.10	\$1,634.80	\$1,791.13	12.5
13	\$1,120.03	\$1,334.89	\$1,523.70	\$1,700.19	\$1,862.77	13
13.5	\$1,163.11	\$1,386.23	\$1,582.31	\$1,765.58	\$1,934.42	13.5
14	\$1,206.18	\$1,437.58	\$1,640.91	\$1,830.98	\$2,006.06	14
14.5	\$1,249.26	\$1,488.92	\$1,699.52	\$1,896.37	\$2,077.71	14.5
15	\$1,292.34	\$1,540.26	\$1,758.12	\$1,961.76	\$2,149.35	15
15.5	\$1,335.42	\$1,591.60	\$1,816.72	\$2,027.15	\$2,221.00	15.5
Length	3.4m	4.3m	5.2m	6.1m	7m	
M² price by width	\$24.37	\$22.97	\$21.68	\$20.62	\$19.69	



## Daisy Float

WT206 \$14.62 each

Size 0.75m x 0.75m up to 0.3m

To raise cover above edge of pool to help prevent debris build up.

1-2 floats per 5m of pool length may be required.

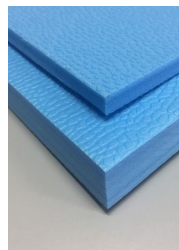
Float Cord 25m (6mm PP to tie floats in place) #415 \$13.03



## BUDGET SPA FOAM COVERS

All Spa sheets supplied rectangular 1.0m wide to be cut to spa waterline shape on site

12 month pro rata warranty



Spa Cover Size

- 2.0 x 2.0
- 2.5 x 2.5
- 3.0 x 2.0
- 3.0 x 2.5
- 3.0 x 3.0
- 3.5 x 2.5
- 4.0 x 2.0

10mm Foam  
R-Value 0.32

- \$193.92
- \$303.00
- \$290.88
- \$363.60
- \$436.32
- \$424.20
- \$387.84

20mm Foam  
R-Value 0.64

- \$349.04
- \$545.38
- \$523.56
- \$654.45
- \$785.34
- \$763.53
- \$698.08

How the spa cover is supplied

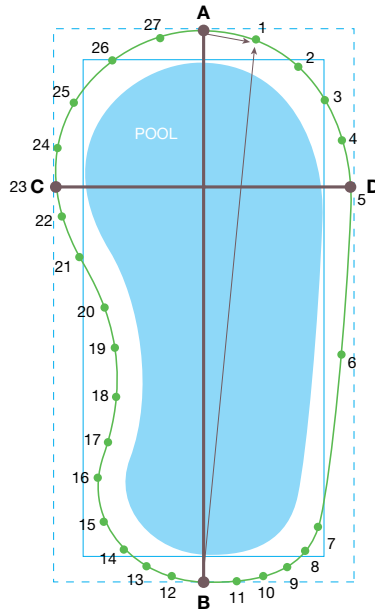
- 2 sheets @ 2m
- 2.5 sheets @ 2.5m
- 3 sheets @ 2m
- 3 sheets @ 2.5m
- 3 sheets @ 3m
- 3.5 sheets @ 2.5m
- 4 sheets @ 2m



All Daisy Pool Covers carry the national Smart Approved WaterMark Approval and Climate Care certification.



# HOW TO MEASURE A WINTERKLEEN COVER



● A - B Length =

● C - D Length =

● Last Point Before B =

From ● A b	●	a From ● B
eg 850 mm	1	eg 10850 mm
	1	
	2	
	3	
	4	
	5	
	6	
	7	
	8	
	9	
	10	
	11	
	12	
	13	
	14	
	15	
	16	
	17	
	18	
	19	
	20	

From ● A b	●	a From ● B
eg 10850 mm	21	eg 850 mm
	21	
	22	
	23	
	24	
	25	
	26	
	27	
	28	
	29	
	30	
	31	
	32	
	33	
	34	
	35	
	36	
	37	
	38	
	39	
	40	

Billing Details:

Date / /

Business Name: \_\_\_\_\_

Contact: \_\_\_\_\_

For. Name: \_\_\_\_\_

Deliver to: \_\_\_\_\_ Contact No.: \_\_\_\_\_

Street Address: \_\_\_\_\_

**1 Rectangle** ----- Indicates Rectangular Cover  
Measure finished cover size length and width.

**2 Shaped** —●— Indicates Curvilinear Measuring:

1 Chalk mark two points ● A and ● B at the longest point 200mm from the edge of the pool. ( Record total width and length)

2 Chalk mark and number a series of ● points 200mm out from pool edge, ● 1, ● 2, ● 3 etc. starting **clockwise** from ● A all around to ● B about 900mm apart. Closer on tighter curves further apart for straighter edges.

3 Measure the distances from ● A to marked ● all points and record the distance to every chalk marked. eg  
● A to ● 1 = 957mm or 95.7 cm

4 Measure the distances from ● B to marked ● points and record the distance to every chalk marked. eg  
● B to ● 1 = 8500mm or 850cm

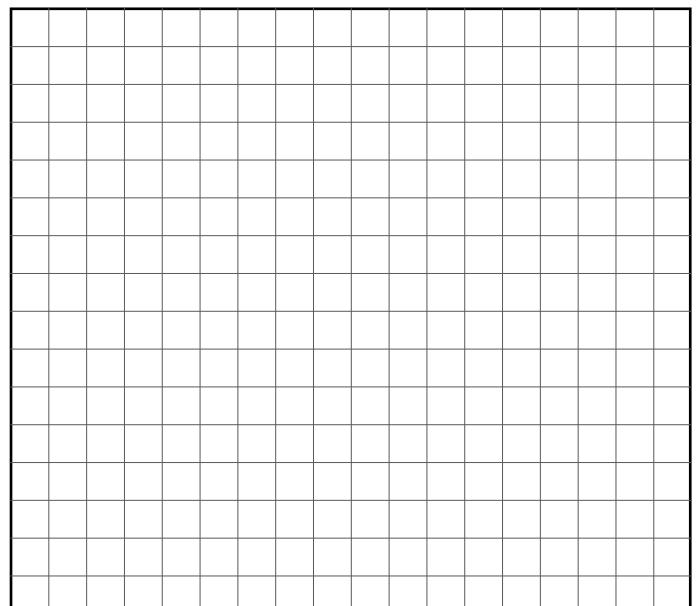
5 Draw a sketch of the pool outline (like the one on left) indicating approximate location of points A and B and the points between.

6 Fax or email to us your measurements in the table below.

The same method and measurements will be used to make the cover.

**NOTE:** This measuring procedure applies only to curvilinear pools. If you measure counter clockwise from 'A' the cover will be manufactured upside down.

Draw a sketch of the plan. Include a photo image if possible.



WinterKleen Colour: Black  Blue  Green  Grey  Tan

# ROLLER PARTS AND ACCESSORIES

ITEM	Part#	Price
5 Star 316ST T Frame (each)	253	\$236.48
5 Star AGA Frame (each)	212	\$345.41
5 Star A75 Frame (each) White	214	\$131.09
5 Star A75 Frame (each) Black	446	\$131.09
5 Star A75 Frame (each) Grey	454	\$131.09
5 Star Bearing (pair) White	P018	\$5.35
5 Star Bearing (pair) Black	449	\$5.35
5 Star Bearing (pair) Grey	457	\$5.35
5 Star FM Mobile T Frame (each)	101	\$251.82
5 Star LP Mobile T Frame (each)	102	\$244.38
5 Star MKII Mobile T-Frame (each) White	P026	\$229.97
5 Star MKII Mobile T-Frame (each) Black	448	\$229.97
5 Star MKII Mobile T-Frame (each) Grey	456	\$229.97
5 Star SQ Stationary Frame (each)	239	\$164.62
5 Star ST T-Frame (each) White	P024	\$192.24
5 Star ST T-Frame (each) Black	447	\$192.24
5 Star ST T-Frame (each) Grey	455	\$192.24
Bonded Washer	P049	\$0.69
Carabiner Clip	130	\$5.53
Castor Assembly (Body/Screw/Nut/Washer)	119	\$38.00
Castor Body only	379	\$7.82
Commercial Castor 100mm (Braked)	121	\$134.17
Cord (2.0m each)	P043	\$1.62
Crank (Buddy)	P020	\$38.43
End Cap	P008	\$5.41
End Slug with Axle 75mm	P006	\$29.64
End Slug with Axle 79mm	251	\$29.64
End Slug with Axle 95mm	252	\$33.89
End Slug with Axle 100mm	P007	\$33.89
End Slug with Axle 125mm	105	\$42.15
End Slug with Axle 125mm Maxi	120	\$44.88
Eyelet Kit = 10 x eyelets 1 x punch	1007	\$10.00
Eyelet Punch	P013	\$3.72
Eyelet Pair (blue)	P012	\$0.63
Eyelet Pair (green)	225	\$0.63
Eyelet Pair (white)	229	\$0.63
Feather Plug	P011	\$0.63

ITEM	Part#	Price
Foot UTC	P001	\$33.02
Handwheel UTC	P005	\$38.41
Handwheel Stainless Steel	254	\$118.23
Handwheel 5 Star White	P048	\$52.44
Handwheel 5 Star Black	452	\$52.44
Handwheel 5 Star Grey	460	\$52.44
Haul Cord 10 metre	131	\$19.59
Haul Cord 15 metre	132	\$28.31
Haul Cord 20 metre	133	\$37.03
Leg & Leg Top UTC	P004	\$30.17
Leg Only UTC	P002	\$18.95
Leg Top Only UTC	P003	\$11.22
Occy Strap UTC	P016	\$11.63
Overcover Ball	126	\$0.84
Overcover strap (Holds cover in high wind)	324	\$20.09
Overcover up to 4.6m (DIY <u>OR</u> order tube size eg OC46)	OC 4 . 6	\$75.80
Overcover up to 6.4m (DIY <u>OR</u> order tube size eg OC64)	OC 6 . 4	\$91.14
Overcover up to 6.5m to 7.9m (Order tube size eg OC73)	OC 7 . 3	\$115.92
Refit Kit (Cover to roller connection kit)	P092	\$31.62
Repair Patch (A4 size)	-	\$34.76
Rubber Non Slip Stopper UTC	P009	\$0.93
Rubber Stopper ST Frame	P030	\$4.70
Sand Change Bag	-	\$23.66
Scissors	215	\$63.94
Shock Cord	228	\$9.71
Slide Clip	129	\$2.50
Spring Loaded Adjuster	127	\$1.28
Stainless Steel Screw	P010	\$0.93
Stainless Steel Self Drilling Screw	248	\$1.10
Washer and bolt (end slug retaining) White	243	\$2.97
Washer and bolt (end slug retaining) Black	450	\$2.97
Washer and bolt (end slug retaining) Grey	458	\$2.97
Yoke & Pin	P019	\$25.11

Pool and cover maintenance products	Part#	500ml	Part#	1L
Aquasaver	376	\$37.18	375	\$70.14
		<b>500ml with trigger spray</b>		-
Bio Pool Cover Cleaner	377	\$37.18		-
Pool Cover Cleaner – Head & Refill			373	\$70.14
Pool Cover Cleaner – Refill only			374	\$37.18



375  
Aquasaver



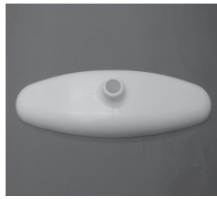
377  
Bio Pool  
Cover  
Cleaner



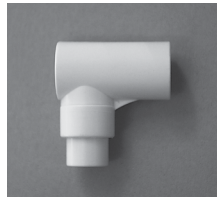
373  
Pool  
Cover  
Cleaner



End Slug



P001  
Foot UTC



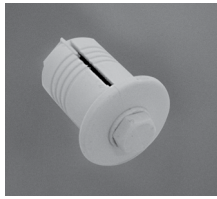
P003  
Leg Top



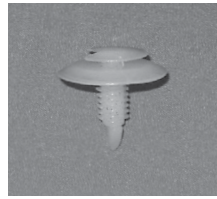
P004  
Leg & Leg Top  
UTC



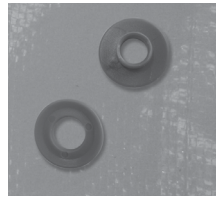
P005  
Handwheel  
UTC



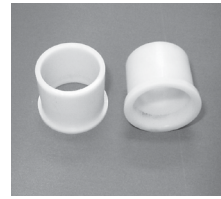
P008  
End Cap



P011  
Feather Plug



P012  
Eyelet (Pair)



P018  
5-Star Bearing



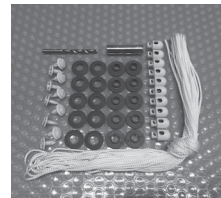
P019  
Yoke & Pin



P020  
Crank (Buddy)



P048  
Handwheel  
5-Star



P092  
Refit Kit



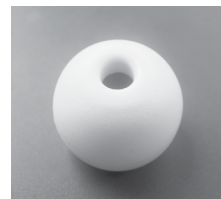
P054  
5 Star  
Overcover



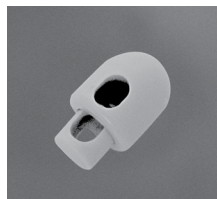
119  
Mobile  
Castor  
Assembly



121  
Commercial  
Castor  
100mm



126  
Overcover  
Ball



127  
Spring  
Loaded  
Adjuster



215  
Upholstering  
Scissors



324  
Overcover Strap

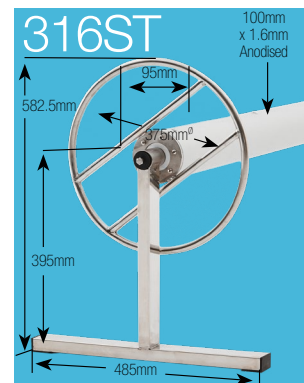
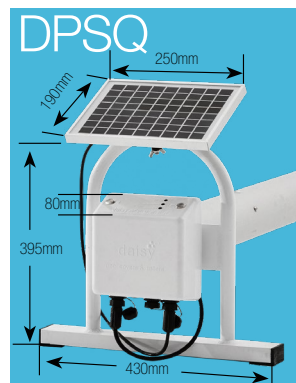
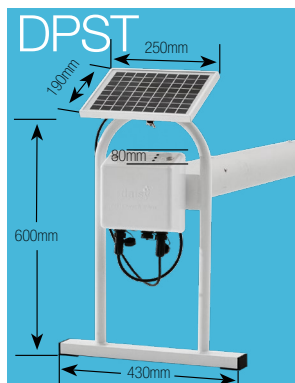
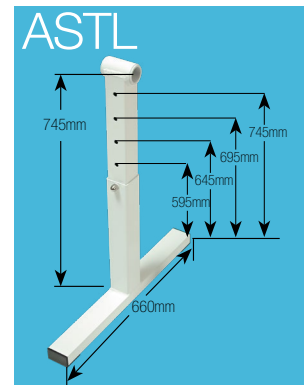
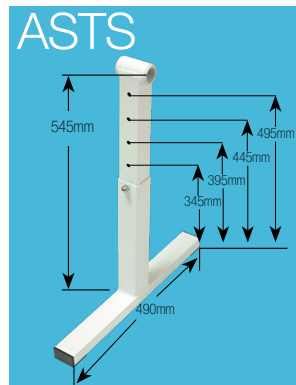
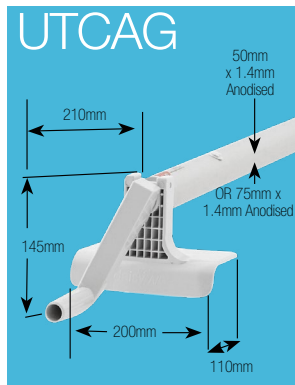
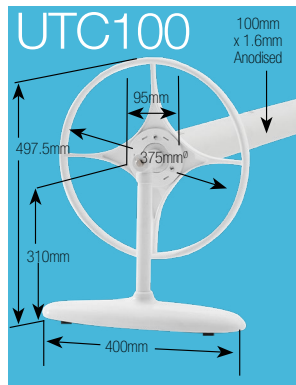
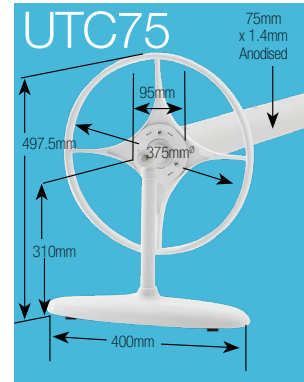
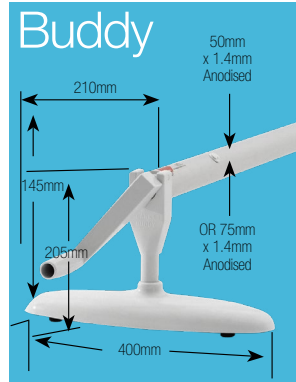
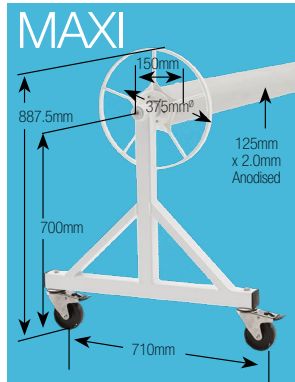
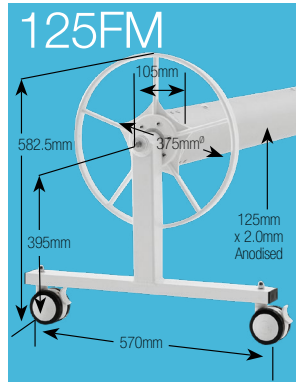
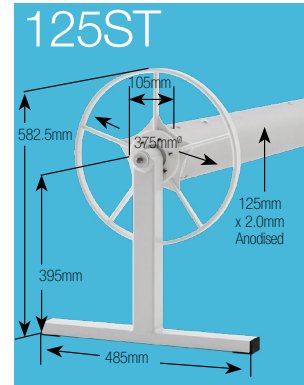
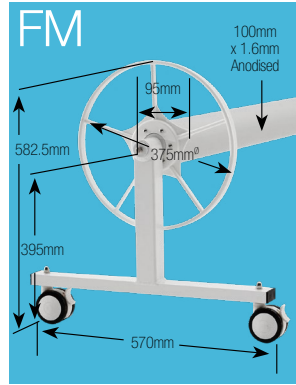
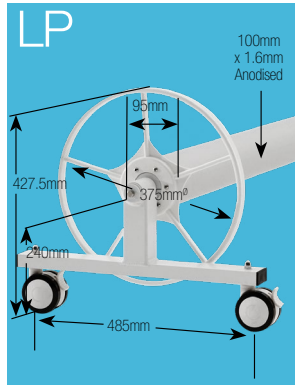
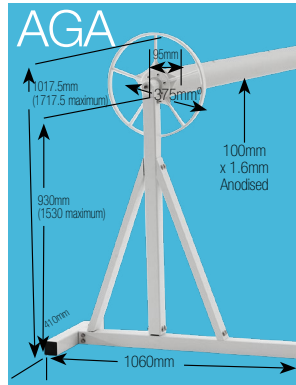
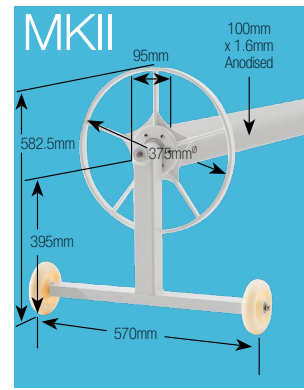
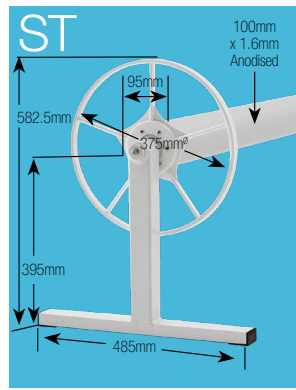
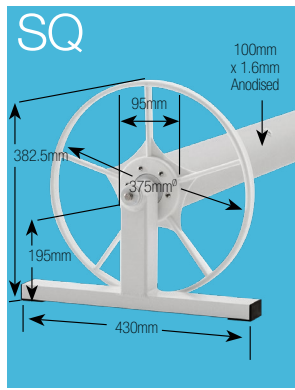
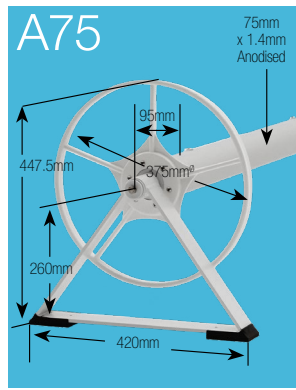


1007  
Eyelet Kit

## Installation

Net Pricing - No Discount Applies	National	Sydney	Perth
Pre Cut	\$71.50*		
Pre Cut Custom (from)	\$99.00*		
Pool Cover or Roller (1 Item)		\$240.00*	\$141.00*
Pool Cover and Roller (2 Items)		\$420.00*	\$246.00*
UBR and Pool Cover		\$598.00*	\$346.00*
Call Out (Measure Service)		\$169.00*	\$87.00*

# ROLLER DIMENSIONS





## Restocking Policy – Cover

If you require a return of a domestic cover or if a cover size that is ordered and supplied correctly turns out to be the incorrect size for the pool, a few scenarios are available.

1

**If the cover is too narrow** (on the width of the pool), then when the cover is delivered back to either of the Daisy's factories in WA or NSW, Daisy will be able to weld onto the width of the cover to make it wider. Daisy will only charge for the material used to weld onto the existing cover. Please note minimum fee of \$50.00 plus GST applies for repair work. NOTE – if the cover has been cut to shape it is likely that by welding on a section it will distort and shrink the edge of the cover rendering it too small. Daisy accepts no responsibility for attempted repairs after the cover has been cut in to pool shape. After approximately one month the cover can lose its "weld ability" therefore we may attempt to assist, however take no responsibility of failed repair attempts.

2

**If the cover is too short** (on the length of the pool) we can not cross weld satisfactorily across the cover and a new cover will be required.

3

**If the cover is DRY**, meaning it has not been rolled onto the pool (NOT meaning a cover rolled onto the pool then removed and dried out), then when the cover is delivered back to either of the Daisy factories in WA or NSW, Daisy will credit the cover MINUS 20% of the non taxed original invoice amount.

4

**If the cover has been on a pool and is wet** and has not been cut to shape, and has been dried as much as possible, then when the cover is delivered back to either of the Daisy factories in WA or NSW, Daisy will credit the cover MINUS 40% of the non taxed original invoice amount.

5

**If the cover has been** on a pool and has been cut to shape, or over three months have passed from the original invoice date, Daisy is unable to accept the cover back for any form of credit.

6

**Any replacement cover** will be invoiced for dispatch and normal freight policy applies, credits will be issued upon receipt and inspection of the cover at the Daisy factories in WA or NSW. Any redelivery of covers repaired and/or altered will incur a freight charge.

## Restocking Policy – Precut Cover

As pre cut covers are custom made to order Daisy Pool Covers cannot accept returns for credit.

## Restocking Policy – Roller

If a domestic roller requires return for credit and it is a stock size, (not a specially manufactured size – specially manufactured rollers and rollers that have been purchased more than three months before the return date will not be accepted for a credit), still in its original unopened packaging, then when the roller is delivered back to

either of the Daisy factories in WA or NSW undamaged, Daisy will credit the amount of the original invoice.

NOTE – All parts of the roller are required and must be unused, undamaged, unassembled and in the original packaging to be eligible for a credit. Credits will be issued upon receipt and inspection of the roller at the Daisy factories in WA or NSW.

## Cover Warranty

All Daisy Pool Covers are covered by our exclusive pro rata month by month warranty to the original consumer. This means that Daisy Pool Covers will credit for the months that the original consumer does not achieve from their cover (up to the warranty period). i.e.

3 years (36 months) for 250B, 5 years (60 months) for 400B, 8 years (96 months) or 10 years (120 months) for 525. It also means that the consumer must pay for the period of time that they have used the product when ordering a replacement cover.

Example: A consumer achieves 3 years, 9 months (45 months) from a 400B cover. Take today's retail price (say \$436.00), divide the price by warranty period in months then multiply by the months the consumer used the cover (IE \$436.00 (retail Price) ÷ 60 months (Warranty period) = \$7.27 (per month price), then multiply \$7.27 (per month price) by 45 (months consumer used product) = \$327.15 charged to client.

## Warranty Claims

To make warranty claims contact Daisy with photos and proof of purchase.

All warranty claims where the original consumer has achieved over 66% (2/3rds) of the life of the cover (warranty period) the warranty claim can be handled by the reseller. Daisy Pool Covers will cover the warranty by reducing the purchase price to the reseller, (using the same formula as above) to ensure resellers receive normal margin while handling the warranty claim. Daisy Pool Covers will guide the warranty procedure and authorise warranty claims via phone after the reseller's inspection of the cover. If any reseller is uneasy handling a warranty claim, Daisy Pool Covers will take over and handle the claim direct with the consumer.

Any warranty claim where the consumer has not achieved 66% (2/3rds) of the life of the cover (warranty period) Daisy Pool Covers must handle direct with the client. In all cases it is the responsibility of the consumer to produce a proof of purchase showing date purchased and series of cover. Please Note – Warranty claims are only redeemable as a discount on the purchase of a replacement cover. No cash payments will be made.

## Freight Warranty

Our policy is to get the product to you in the most cost effective manner possible. We do not apply margin or profit to freight charges. We reserve the right to pass on any excess costs involved in getting the product to you. It is advisable to ensure that you understand the total cost of the product and add the relevant tax and freight components prior to quoting a price to your client. Our staff are always willing to give you these total costs at any time on any job.

Metro Delivery Time for standard domestic covers and rollers is approximately 2-3

working days, country areas add 1-2 extra working days.

Unless otherwise stated, all prices are free into store in Perth, Sydney, Melbourne, Brisbane, Canberra & Adelaide Metropolitan areas.

All other deliveries will incur a lower cost per item when you arrange multiple order deliveries to a single delivery point. Postcode range available.

	Non Metro*	
	Zone 1	Zone 2
Cover or Roller - 1 item	\$34.20	\$80.85
2 items	\$50.30	\$122.20
3-6 items	\$64.30	\$151.60
7-9 items	\$79.00	\$186.50
10+ items	\$96.49	\$228.00

All freight prices quoted are Inc. GST.

## Parts Freight\*

Medium item (FRME)	\$23.78
Large item (FRLG)	\$34.20

## Long length surcharge

Long length surcharge of \$124.10 inc GST applies to all fixed length rollers supplied over 6.5m. Surcharge applied regardless of delivery location, surcharge is additional to any other delivery charges.

## Minimum Cover Size

Single order cover size for Solar Covers is 5.76m<sup>2</sup> (ie: 2.4 x 2.4m) and for ThermoTech Foam 4.8m<sup>2</sup> (ie: 2.0 x 2.4m). Any single cover orders smaller than these sizes will be charged at these amounts.

## Minimum Order

Minimum order: A minimum invoice value of \$75.00 before tax is required to avoid a freight charge. Any total invoice amount under \$75.00 before GST will be subjected to an additional freight charge as follows:

Single Parts from \$23.78\* Inc. GST  
Any other goods 1 item charge

## Net Pricing\*

Products such as freight, installation, precut or dig templates that are marked with \* indicate net pricing where no discount is applied.

## Level 2 Discount Structure^

Some products from Daisy are priced at a non standard speciality discount structure. Where you see ^ by a recommended retail price, trade discount varies from normal discount structure. Contact Daisy for more information.

## The Acoustic Box Discount Structure ~

TAB products are priced with specific trade pricing not a standard discount percentage, see Dealer Portal or ask for Trade Price List

## NOTES:

Unless specifically and clearly requested, all pool covers are made panel Width (panels wide for narrowest measurement) by Length (panels long for longest measurement).

If any specific manufacture requests are made a diagram is required.

Pool covers are made to fit measurements supplied NOT for specific orientations of panels.

## Technical Information

For all other information go to 'Help & Advice' on our website.

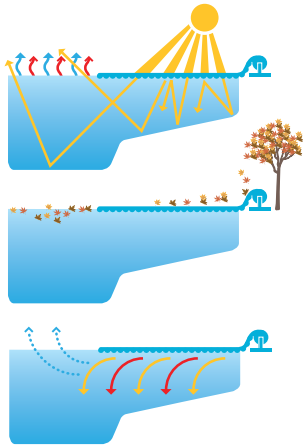
[daisypoolcovers.com.au](http://daisypoolcovers.com.au)



## REDUCE THE COST OF MAINTAINING A WARM SUSTAINABLE POOL.

### Here's how you save:

- SAVE more of the sun's warmth.** Warms your pool by up to 8°C for free.
- SAVE on water, up to 10,000L per month.** Improves water retention.
- SAVE on heat loss.** Reduced heating costs and heat loss.
- SAVE on cleaning.** Helps keep out dirt and leaves.
- SAVE on chemicals.** Reduce salt and chemical use by up to 50%.
- SAVE on time.** Rolls off and on in 30 seconds.
- SAVE on evaporation.** Reduces evaporation by 97%.
- SAVE money** Higher quality. Better design. Lasts longer.

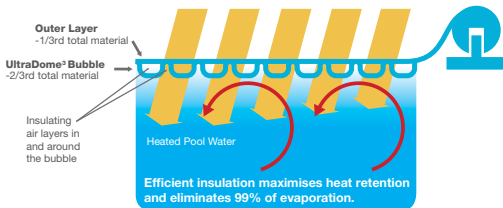


**Daisy Saves**  
warmth and evaporation

**Daisy Saves**  
on cleaning

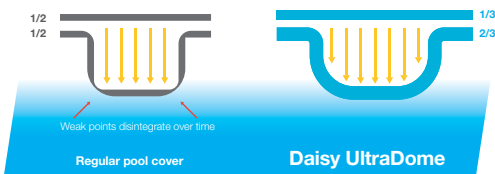
**Daisy Saves**  
on chemical loss

## REDUCE THE COST OF MAINTAINING A WARM SUSTAINABLE POOL.



### THE DAISY DIFFERENCE

The bubble is the same thickness throughout for greater strength and longer life

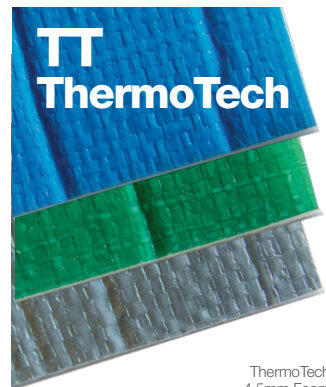
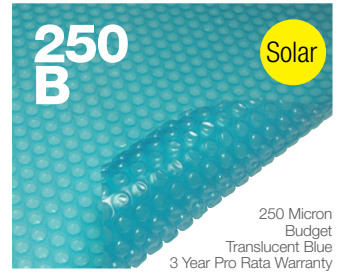
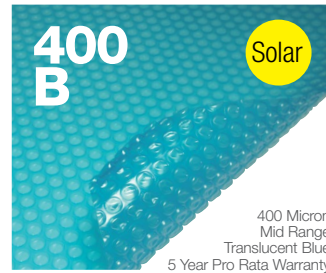
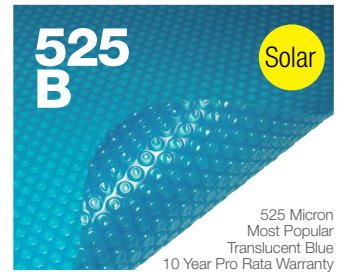
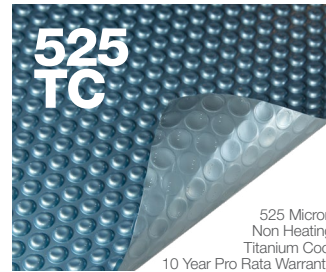
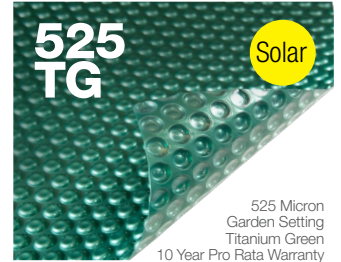


WinterKleen covers are ideal when the pool is not in use for extended periods and save your UltraDome Daisy cover from unnecessary exposure. WinterKleen stretches tightly over your pool so that leaves and debris blow off.

# 1 CHOOSE YOUR COVER

## We stand by our product

We honour all warranty claims promptly. If you have a problem with any Daisy product call us and we'll fix it.



# 2 CHOOSE YOUR ROLLER

Each roller is made for a small, medium or large pool. An overcover and cover attachment kit is supplied with every domestic roller.

**5 Star Roller Range 10 year pro rata warranty**



**A75 Stationary for smaller pools**  
SQ Squat profile



**ST Stationary**  
MK II Directional mobile



**LP Fully mobile, low profile**  
FM Fully mobile



**AGA Above ground, adjustable**  
**316ST Marine grade, SAE 316 Stainless Steel**



**DP Daisy Power Electric roller, battery powered AC charge + solar models**  
**UBR Under Bench Roller**  
**125FM Fully mobile for longer wider pools**



**Below Ground Systems**  
**BGB Below Ground Box**  
**DMR Deck Mount Roller**



**125ST Stationary for longer wider pools**



**Buddy**  
**UTC Roller Range - 5 year pro rata warranty**



**BUDDY Cost effective for small pools**  
**UTC 75/100 Cost effective 75 or 100mm for small to large pools**



**UTCAG Cost effective 50 or 75mm for above ground pools**



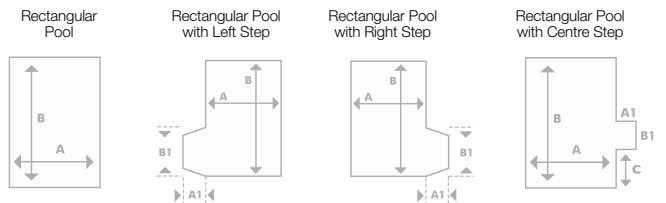
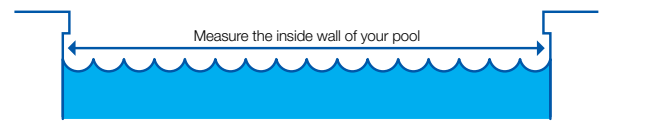
**MAXI Semi Commercial Fully Mobile for larger pools**

# 3 POOL SIZE

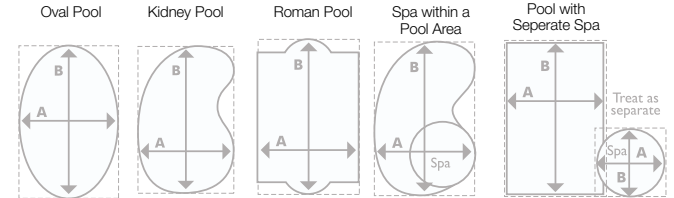
Simply decide on the essential details:

- (1) type of cover
- (2) roller system
- (3) pool size: length (B) X width (A) (+ step area) = Total square metres.

Ask for a quote let's say - 52m<sup>2</sup> 525B with an ST roller. Take into account if your pool is indoors or outside. Do you need more heat or less or have leaf debris. Remember your roller adds years to the life of the cover. Does your pool have non-standard features? These are some determining facts you need to discuss with us.



For shaped pools, treat as rectangular.



## And the answer is:

My Daisy Cover: ..... \$

My Daisy Roller: ..... \$

Square Metre Total: .....

Installation: ..... \$

Distributor Quote from:

# 4 ORDER YOUR DAISY FROM AN APPROVED EXPERT

# DAISY POOL COVER / ROLLER ORDER

Your Order Number

## BILLING DETAILS

Date: \_\_\_\_\_  
 Business name: \_\_\_\_\_  
 Street Address: \_\_\_\_\_  
 Suburb: \_\_\_\_\_ Postcode: \_\_\_\_\_  
 State: \_\_\_\_\_ Phone: \_\_\_\_\_

### PAYMENT

Card Number: \_\_\_\_\_  
 Expiry date: \_\_\_\_\_

Do not write customers payment details

## POOL MEASUREMENTS

Pool Length: \_\_\_\_\_ x  
 Pool Width: \_\_\_\_\_  
 or Pool Name: \_\_\_\_\_  
 Precut  Yes  
 Step Area  LH  RH  
 Step Length \_\_\_\_\_  
 Step Width \_\_\_\_\_

## COVERS

	Tick ✓	Size
525TB	<input type="checkbox"/>	
525TG	<input type="checkbox"/>	
525B	<input type="checkbox"/>	
525TC	<input type="checkbox"/>	
400B	<input type="checkbox"/>	
350i	<input type="checkbox"/>	
250B	<input type="checkbox"/>	
TTB Foam	3mm <input type="checkbox"/> 4.5mm <input type="checkbox"/>	
TTG Foam	<input type="checkbox"/>	
TTS Foam	3mm <input type="checkbox"/> 4.5mm <input type="checkbox"/>	
092 Refit kit for existing rollers	<input type="checkbox"/>	
Overcover for existing rollers	<input type="checkbox"/>	
WK Mesh Black WinterKleen	<input type="checkbox"/>	
WK Mesh Blue WinterKleen	<input type="checkbox"/>	
WK Mesh Green WinterKleen	<input type="checkbox"/>	
WK Mesh Grey WinterKleen	<input type="checkbox"/>	
WK Mesh Tan WinterKleen	<input type="checkbox"/>	
WinterKleen Curvilinear Measure	<input type="checkbox"/>	photocopy page 25
Accessories N <sup>o</sup>	<input type="checkbox"/>	

## SHIPPING DETAILS

Only fill in this section to drop ship to your customer

Customer name: \_\_\_\_\_  
 Street Address: \_\_\_\_\_  
 Suburb: \_\_\_\_\_ Postcode: \_\_\_\_\_  
 State: \_\_\_\_\_ Phone: \_\_\_\_\_  
 Extra Info \_\_\_\_\_

## ROLLERS

	Black	Grey	White	Tick ✓	Size
A75	<input type="checkbox"/>	<input type="checkbox"/>	<input type="checkbox"/>		
SQ			<input type="checkbox"/>		
ST	<input type="checkbox"/>	<input type="checkbox"/>	<input type="checkbox"/>		
MKII	<input type="checkbox"/>	<input type="checkbox"/>	<input type="checkbox"/>		
LP			<input type="checkbox"/>		
FM			<input type="checkbox"/>		
316ST			<input type="checkbox"/>		
AGA			<input type="checkbox"/>		
125ST			<input type="checkbox"/>		
125FM			<input type="checkbox"/>		
125Maxi			<input type="checkbox"/>		
Daisy Power SQ			<input type="checkbox"/>		
Daisy Power ST			<input type="checkbox"/>		
Solar Panel PV			<input type="checkbox"/>		
Buddy 50/75			<input type="checkbox"/>		
UTC AG 50/75			<input type="checkbox"/>		
UTC 75/100			<input type="checkbox"/>		
UBR	CA <input type="checkbox"/>	CS <input type="checkbox"/>	LO <input type="checkbox"/>	WRC <input type="checkbox"/>	POWER <input type="checkbox"/>
Other Styles/Products				DMR <input type="checkbox"/>	
				BGB <input type="checkbox"/>	
				BGBSMALL <input type="checkbox"/>	
Daisy Drill Drive				<input type="checkbox"/>	
Daisy Install				<input type="checkbox"/>	Yes

Only in Perth and Sydney Metro



AUSTRALIA'S LARGEST SUPPLIER OF POOL COVERS AND ROLLERS

Administration Centre: 8 Granite Place, Welshpool, WA 6106. NSW Production Centre: 120 Newton Road Wetherill Park NSW 2164  
 1300 551 811 Int: +618 9251 7999 Fax: 1300 885 242 Email: sales@daisypoolcovers.com.au daisypoolcovers.com.au