



Daisy ♥
Quality

We stand by our product.



Caddy Pro

User Manual and Warranty

daisy
pool covers & rollers
**COMMERCIAL
DIVISION**

Contents

Introduction	3
Tips	3
Safety	4
How to Use Caddy Pro	4
Deploy Pool Cover	5
Recover Pool Cover	6
Charging and Batteries	7
Warranty	7
Parts Manual	9

Daisy Commercial Caddy Pro

Portable Drive System

Daisy Commercial Caddy Pro is a commercial pool solution that has been designed and built as a robust portable drive to recover, and deploy, single or multiple commercial Thermal Foam or Solar pool covers onto Daisy Commercial Roller systems.

The Caddy Pro is a fully self contained, stand alone powder coated Stainless Steel console that suits any commercial pool from a single cover and roller, to multiple pools (e.g. 50m and 25m within the same complex) with multiple cover and roller systems.

The Caddy Pro's 24v heavy duty internal batteries will usually last for weeks of work however, as there is an inbuilt battery charging system (powered by normal 10A GPO), we advise to simply park and place the Caddy Pro on charge when it is not in use.

With tilt and overload protection, along with normally off switching (the unit will only work when a button is pressed, it will stop when you release the button), and speed control with soft start, this simple yet robust system is designed to make every pool operator's life easier and reduce OH&S risk that may occur with manual roller usage.

Simple height adjustment allows the operator to fine tune the drive height to suit the rollers within the pool area. The Caddy Pro can be used for all Daisy Commercial rollers with a 20mm square drive on them and can be built to suit the Daisy Commercial Under Bench Rollers' lower height.

The Caddy Pro drives forward and reverse with the push of a button so once it is on the drive of the roller, simply press the button to recover the pool cover back on to the roller.

The Caddy Pro console handle has been ergonomically designed to make lining up the internal square drive easy. The drive drum slides onto the external square drive of the roller while using the simple height adjustment then, with the press of a button, you are recovering the pool cover in no time at all.

Deploying the pool cover is a breeze!

1. Attach the haul cord to the cover
2. Take the Caddy Pro to the opposite end of the pool, approximately in the centre of the cover (2-3 metres away from the pool water edge)
3. Feed the haul cord under the bottom idler roller then up to the back of the drive drum and hook the haul cord over the cut out finger of the drive drum.
4. Then, simply push the button to haul the cover onto the pool. The recover drum simply slides out to the free wheel so you can remove the haul cord ready to deploy the next cover.

Tips

- Always use caution and safety when operating your Caddy Pro
- Never leave your Caddy Pro unattended during operation.
- When recovering pool cover – Always roll pool cover over top of roller
- When deploying pool cover – Always thread haul cord under idler pulley and have Caddy Pro 3m from pool end
- Leave Caddy Pro on charge to maintain battery when not in use
- When deploying (pulling covers onto pool) always locate your Caddy Pro at least 3 metres back from the end of the pool.
- The Caddy Pro is splash resistant however please store undercover when not in use, excessive heat and humidity may shorten the life span

Safety

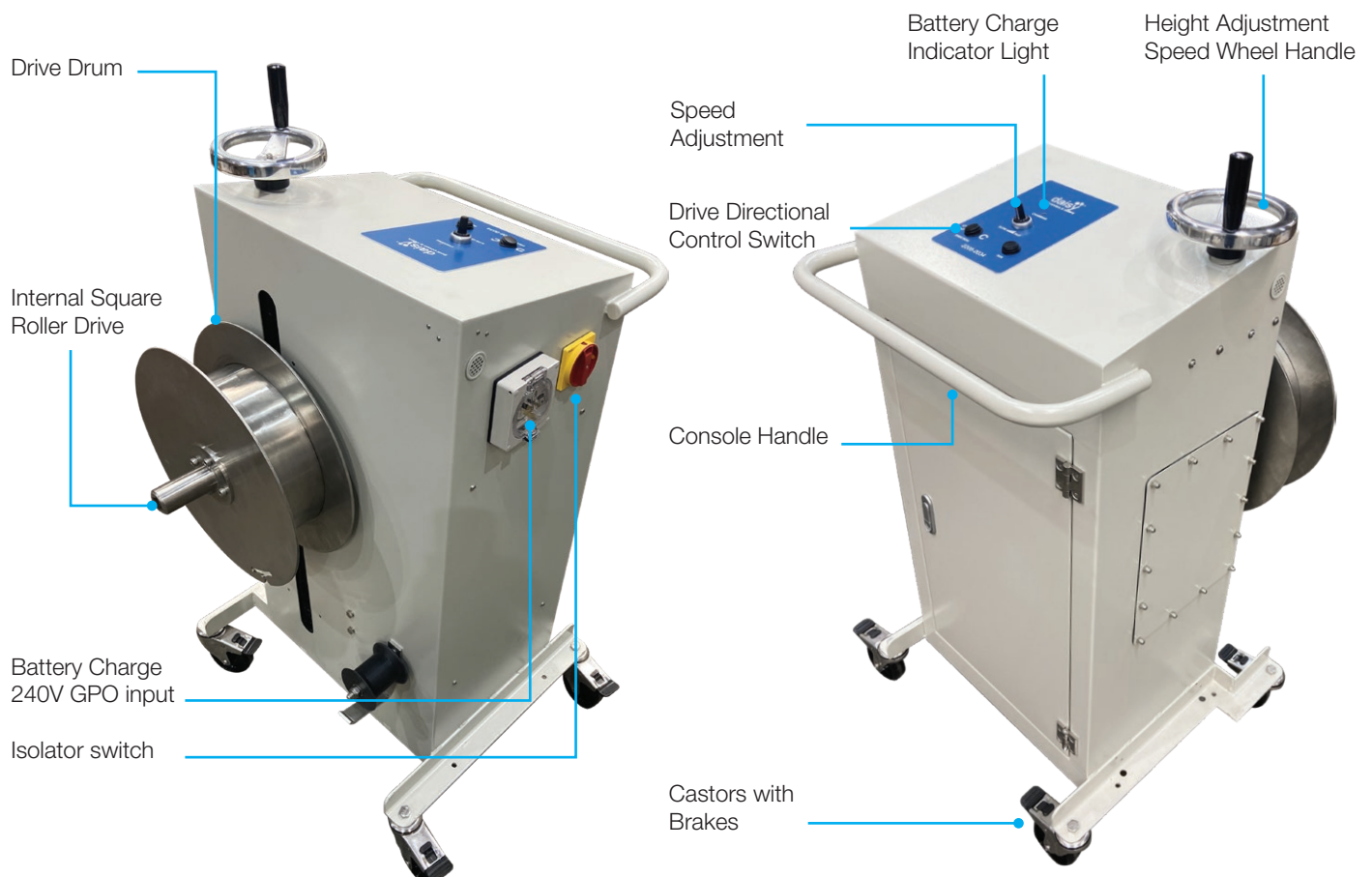
Please be aware of your and other people's safety when using your Caddy Pro and Daisy Commercial Roller Systems

1. Always keep hands, fingers and clothing clear of the Caddy Pro and roller whilst it is in use
2. If the pool cover snags or catches on anything, stop immediately to fix the problem before operating the Caddy Pro again. Failure to stop or fix the problem will result in damaging or tearing the pool cover
3. Do not try to force anything while lining up or operating the Caddy Pro
4. If you have any issue or problem with the Caddy Pro stop using the unit immediately and report the problem/fault
5. If the cover needs realigning during retrieval, stop the Caddy Pro then realign before re-starting operation
6. When charging ensure the area is well ventilated
7. Do not operate the Caddy Pro whilst charging the battery.
8. If the cover winch stalls or is overloaded, the motor thermal overload will trip out
This is an auto reset function, wait 5-10 mins for auto reset to continue with operation. If the unit does not auto reset there may be a more serious fault and a technician should be called

How to Use Caddy Pro

For safety, the Caddy Pro buttons will only drive the motor when you push the button.

Always keep hands, fingers and clothing clear of the winch whilst it is operating.



Deploy Pool Cover (pull cover onto pool)

Position the Caddy Pro at the opposite end of the pool to the roller and **at least 3 metres back from the pool**.

Lock all 4 castor brakes.

Thread haul cord under idler pulley, connect the haul cord to drive drum by looping handle over drum finger.

Ensure the tow rope passes **under the idler pulley** and through the slot in the outer disc of the winch drum. [See Fig 1]

Ensure the drive drum is pushed in to engage the drive (pull out to free wheel and unwind haul cord...push in to drive). [See Fig 2]

Push the directional drive button making sure the cord is being fed onto the drive drum.

Ensure the pool cover and the haul cord do not catch on anything during operation.

You can guide the cover onto the pool by stopping operation and moving Caddy Pro sideways along the pool deck.

Release the directional drive switch (stop pressing the switch) before the cover harness hits the pool end.

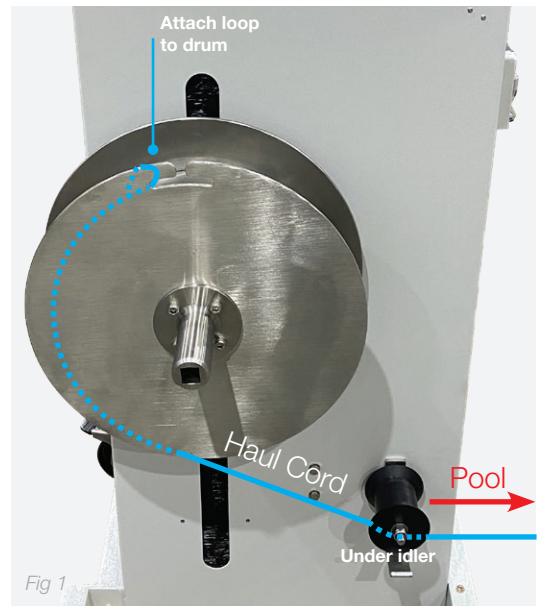
Do not leave the Caddy Pro unattended. Harnesses, covers and rollers may catch or jam occasionally. You must be prepared to stop operation **immediately** if any problem occurs. Failure to stop immediately when a problem occurs may result in personal injury or serious damage to your pool cover.

Caddy Pro has been designed so that you only need to use one haul cord.

You can store the haul cord on the drive drum.

To remove the haul cord from the drive drum, simply pull the drum away from the Caddy Pro body, this will disengage the drive and allow the drum to free wheel. Pull out your haul cord then push the drive drum back in to engage the drive. [See Fig 3]

Always keep hands, fingers and clothing etc. clear of the winch whilst it is operating.



Recover Pool Cover (remove pool cover off pool onto roller)

Push the drive drum towards the Caddy Pro body to engage the drive. [See Fig 4]

Manoeuvre Caddy Pro so the internal square drive in the end of the drive drum lines up to the square drive of the Daisy roller. Use the height adjustable speed handle on the top of the console to lift up or drop down the drive drum so you can line up the centre drive of the Caddy Pro to the centre shaft of the roller. Then push the Caddy Pro onto the roller to engage the drive coupling. [See Fig 5]. Push the directional drive button making sure the cover is being rolled up over the top of the roller.

NOTE: For Under Bench Roller use modification required for height

Do not try to push the Caddy Pro sideways when lining up the drive coupling. This may damage the castors.

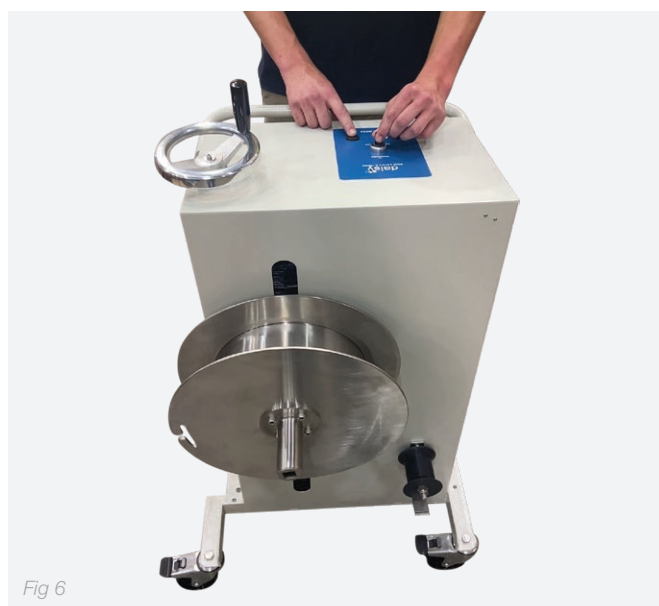
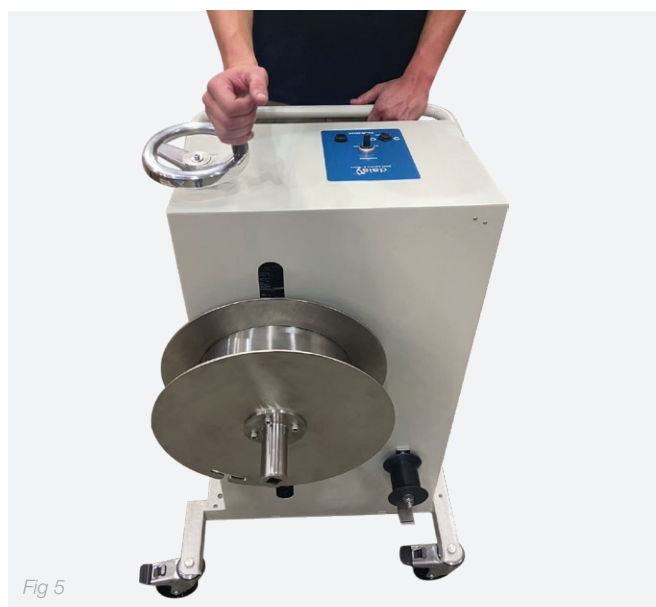
Check that the pool cover is not snagged on anything, then press the direction button to start driving the Caddy Pro. [See Fig 6]

IMPORTANT: Always roll the pool cover up and over the top of the roller. [See Fig 7]

Do not leave the Daisy Caddy Pro unattended when it is working.

Remember: The diameter of the cover will increase as the pool cover loads onto the roller. Towards the end of a cover pull, the cover goes onto the roller quite quickly, so be prepared to stop the unit when the cover is off the pool.

Always keep hands, fingers and clothing clear of the winch whilst it is operating.



Charging and Batteries

Your Caddy Pro is fitted with a 2 x 40 Amp/hour sealed battery. These batteries have plenty of capacity and, depending on the size of the pool and frequency of use, can last up to a week between charges however more regular charging is recommended.

For best results and best battery life, charge the unit regularly - twice a week or more is suggested however best practice is to leave the Caddy Pro plugged in when not in use.

All that is needed to plug in the Caddy Pro and charge the batteries is a short extension lead into the socket provided on the side.

Under normal operation, it takes about 6 hours to fully recharge your battery.

Battery charge indication light

Illuminated red when 240V GPO is plugged in to Caddy Pro = battery is being charged by battery charger

Illuminated red after use = battery is not fully charged

Illuminated green = battery in fully charged state

NOTE: red indicator light does not mean a fault, it only means the battery is not fully charged, this is normal after use.

Technical charging explanation from manufacturer: At the beginning stage of operation, the charger provides the largest current with 14.4Vdc of output voltage (for 12V batteries) to charge batteries. The LED indicator will lighten in red and the built-in fan will spin to dissipate the heat (360W only). After a period of time (probably a couple of hours, based on the capacity of batteries), the charging current will decrease gradually. After reaching 10% of its maximum value, the charger will go into "floating-charge" stage. The fan will stop spinning, charging voltage will decrease to 13.6Vdc, and the LED indicator will turn to green.

The battery charger changes to a float mode when the batteries are charged. This mode keeps the battery at a fully charged state. The float mode prevents over-charging.

Leaving the battery on charge is not detrimental and is recommended in any off season period.

Store your Caddy Pro in a protected cool, dry, non corrosive area.

NOTE. It is recommended for best practice to keep your Caddy Pro plugged in when not in use.

Warranty

Serial No: _____

Purchase Date: _____

Purchased From: _____

Daisy Pool Covers warrants all components of the following products to be free from defects in material and/or workmanship for a period of 1 year from the original date of purchase or installation

1. This warranty only applies if the Product has been purchased from a dealer authorised by Daisy Pool Covers to supply it (Authorised Dealer). Purchase from an Authorised Dealer ensures that the Purchaser has access to appropriate technical knowledge and advice.
2. Daisy Pool Covers' liability under this warranty is limited, at its option, to the repair or replacement of the Product or the payment of the cost of having the Product repaired or replaced.
3. This warranty does not apply in the following circumstances:
 - a) if the Product has not been installed in accordance with Daisy Pool Covers' installation instructions;
 - b) if the Product has been modified other than as authorised by Daisy Pool Covers or if a component part has been replaced by a part that is not a genuine Daisy Pool Cover product;
 - c) if a defect results from use of the Product outside recommended operating conditions; or
 - d) if a defect results from damage (including damage to any internal electronics) caused by a power surge or lightning strike.
4. Without limiting 3 above, Products sold by Daisy Pool Covers are designed for use with swimming pool water balanced in accordance with Australian Standard AS3633-1989 with a pH range of 7.0 - 7.8. Maximum chlorine readings should not exceed 4ppm. Where pool water is not maintained within these parameters, Daisy Pool Covers will not be responsible under this warranty for any resulting damage, including damage caused by corrosion, scaling or stress loading.
5. Replacement parts supplied under this warranty are warranted to be free from defects in materials and workmanship for the remainder of the warranty period or for 12 months from the supply of the replacement, whichever is longer.

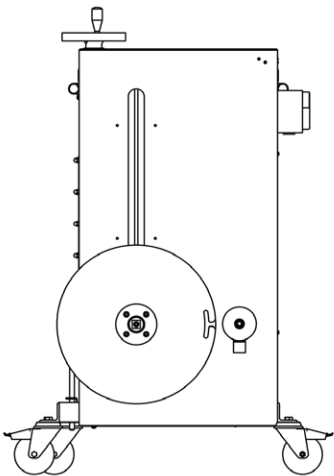
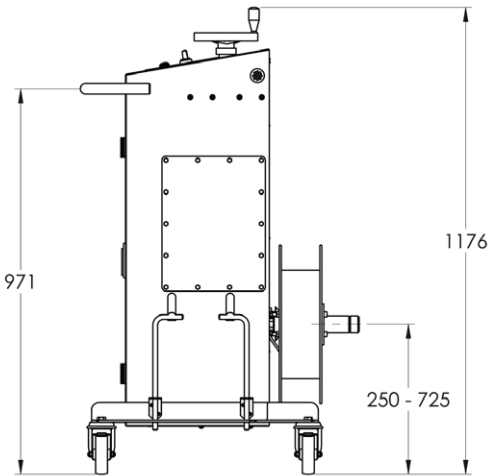
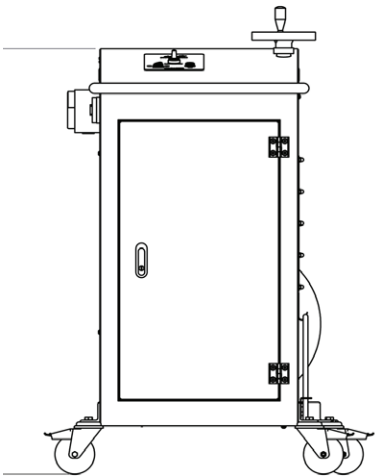
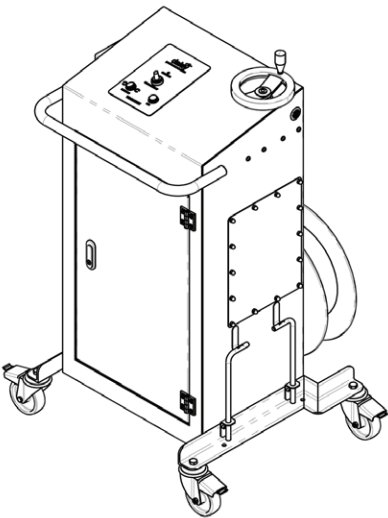
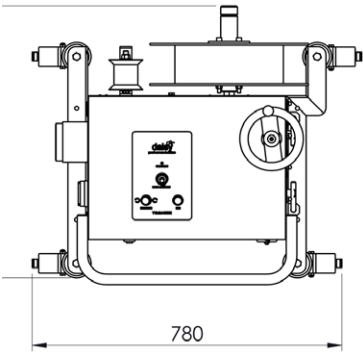
6. Proof of purchase must be received by Daisy Pool Covers, prior to any warranty work being approved. Where applicable, a serial number, installation date and name of installer is required as part of the registration process. How to make a warranty claim
7. The Purchaser must telephone or email Daisy Pool Covers as soon as possible after the discovery of the defect and in any event, within the relevant warranty period Contact details are:

Daisy Pool Cover 8 Granite Place, Welshpool WA 6106 Telephone: 1300 55 18 11
Email address: sales@daisypoolcovers.com.au
8. Daisy Pool Covers reserves the right to determine, in relation to each warranty claim, whether the Product should be returned to the Authorised Dealer at the address where the Purchaser purchased the Product or whether warranty service will be provided in the field, repaired at a Daisy Pool Covers workshop or at the premises of an authorized Daisy Pool Covers warranty agent.
9. If it is necessary for the Purchaser to incur freight charges in making a valid claim under this warranty, Daisy Pool Covers will reimburse the Purchaser for charges reasonably incurred upon proof of the charges. Warranty Exclusions
10. This warranty extends to the original owner, beginning on the date of installation and is not enforceable by any other party without the prior written consent of Daisy Pool Covers
11. Daisy Pool Covers is not liable under this warranty if the installation of the Product was not carried out by a suitably qualified technician
12. This warranty does not cover damage cause by:
 - a) Misuse or abusive use of the Product
 - b) Improper installation
 - c) Incorrect or improper maintenance or failure to maintain the Product
 - d) Adverse external conditions such as power surges, thunderstorm activity, acts of God, damage caused by vermin, insect infestation or any other act or circumstance beyond Daisy Pool Covers control
 - e) Repair, modification or work carried out on the Product other than by Daisy Pool Covers or an Authorised Dealer
13. This warranty does not cover
 - a) service cost in replacing or maintaining consumable parts which have ceased working through normal wear and tear
 - b) cosmetic damage such as to the exterior finish
 - c) minor imperfections with design specifications so that not materially alter functionality
 - d) any battery failure or replacement
14. To the extent permitted by law, Daisy Pool Covers is not liable for any incidental or consequential loss incurred in connection with the removal or replacement of the Product under this warranty
15. To the extent permitted by law, Daisy Pool Covers disclaims all other warranties, either express or implied, including, but not limited to, implied warranties of merchantability and fitness for a particular purpose with regard to Daisy Pool Covers products, parts and/or any accompanying written materials Additional guarantees, rights and remedies Australian Purchasers - Guarantees under the Australian Consumer Law
16. The benefits of this warranty are in addition to other guarantees, rights and remedies Australian consumers have under the Australian Consumer Law.
17. Daisy Pool Covers products come with guarantees that cannot be excluded under the Australian Consumer Law. You are entitled to a replacement or refund for a major failure and for compensation for any other reasonably foreseeable loss or damage. You are also entitled to have the goods repaired or replaced if the goods fail to be of acceptable quality and the failure does not amount to a major failure.

INCONSISTENCY WITH WARRANTY STATEMENTS IN PRODUCT MANUALS OR OTHER DOCUMENTS ACCOMPANYING PRODUCTS

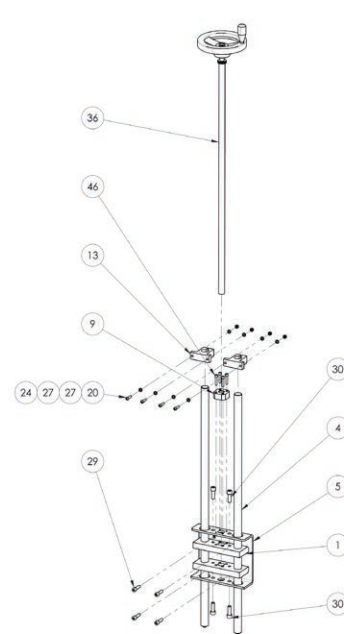
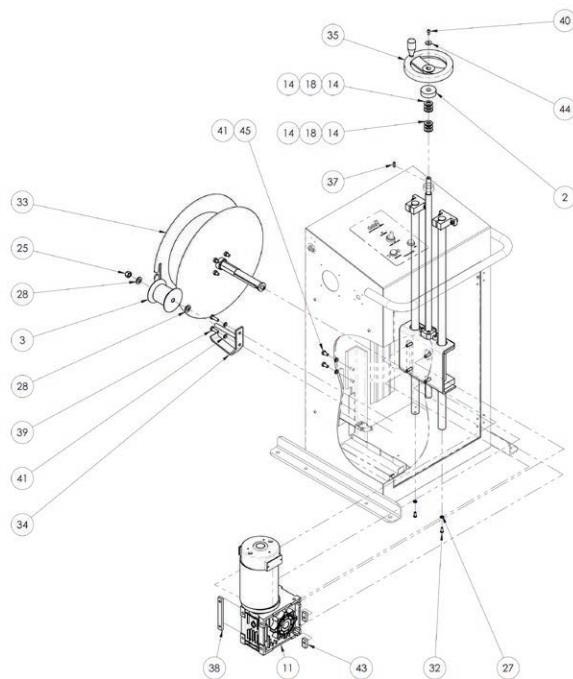
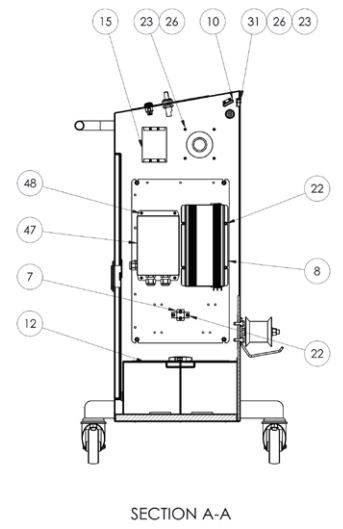
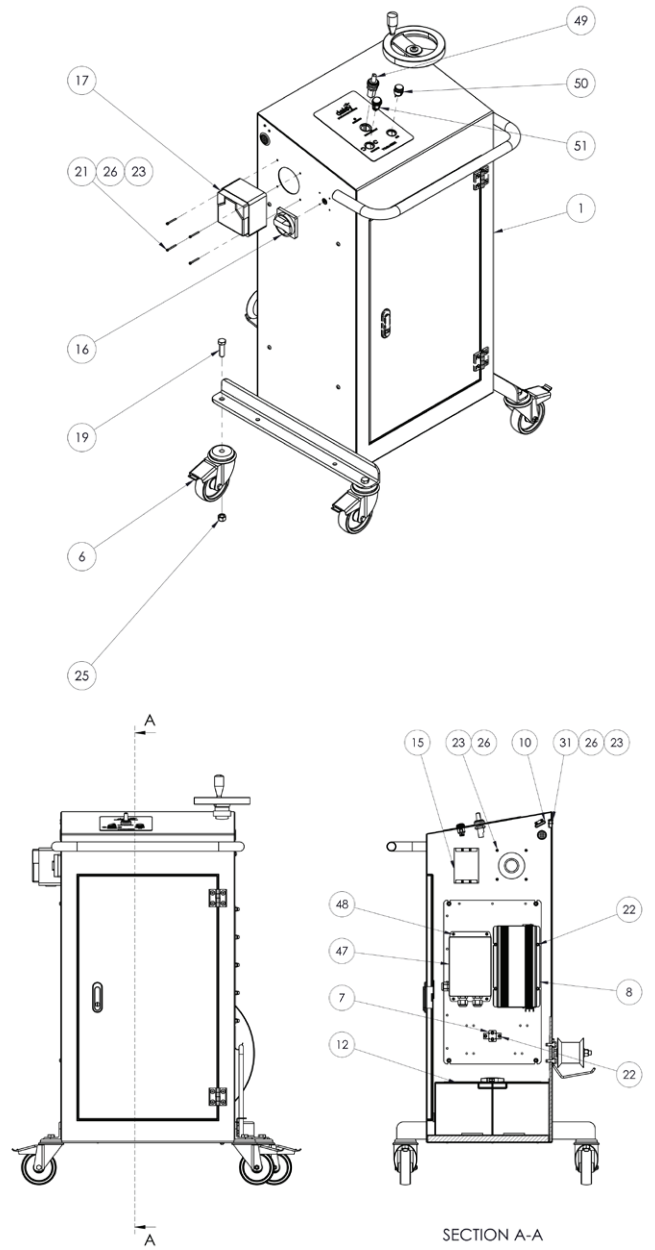
If any warranty statements in a Daisy Pool Covers product manual or other document are inconsistent with the above Warranty and Guarantees, the above overrides and replaces the inconsistent statements.

Parts Manual

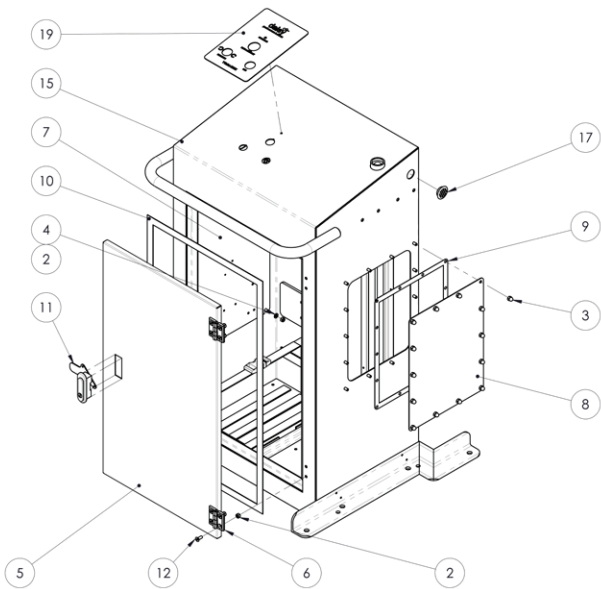
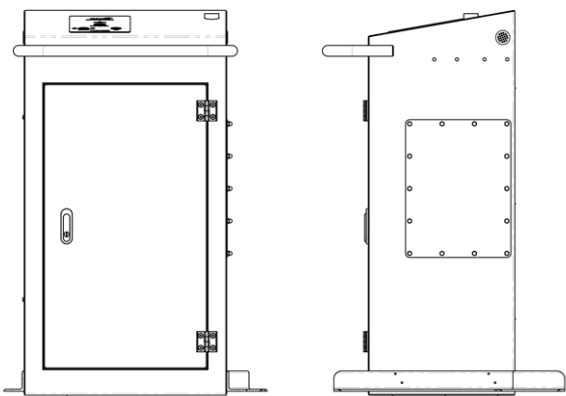


ASSEMBLY PARTS LIST

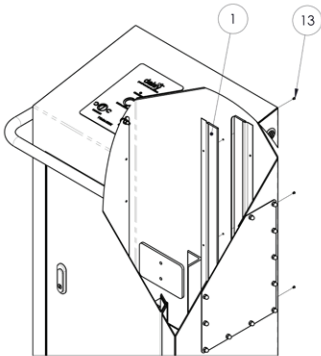
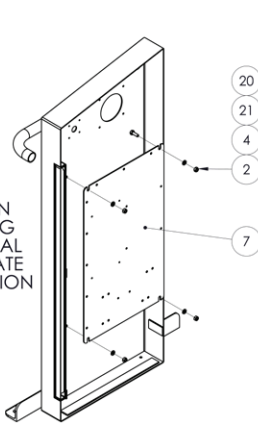
ITEM NO.	DESCRIPTION	PART NUMBER	
1	BLOCK, BEARING	1405-105	2
2	COVER, DUST	1405-106	1
3	ROLLER, ROPE GUIDE	1405-110	1
4	SHAFT, BEARING	1405-111	2
5	BRACKET, MOTOR	1405-113	1
6	CASTOR - 100 DIA WITH BRAKE	1405-118	4
7	CIRCUIT BREAKER 24VDC 40A	1405-122	1
8	BATTERY CHARGER	1405-123	1
9	NUT	1405-125	1
10	SWITCH, TILT	1405-126	2
11	MOTOR/GEARBOX	1405-127	1
12	BATTERY, 12V 40AH	1405-128	2
13	BLOCK, SUPPORT	1405-129	2
14	WASHER, SERIES LS RACEWAY	1405-130	4
15	DISCONNECTOR, 3 POLE SWITCH 63A	1405-131	1
16	SWITCH, MAIN	1405-132	1
17	INLET, AU APPLIANCE 3 PIN 10A	1405-136	1
18	BEARING, THRUST NEEDLE ROLLER	1405-141	2
19	SET SCREW, HEX M12 X 40 G316/A4	1405-142	4
20	SCREW, BUTTON SOCKET M6 X 25 G316/A4	1405-142	4
21	SCREW, SOCKET CAP M3 X 30 G316/A4	1405-143	4
22	SCREW, SOCKET CAP M5 X 8 G316/A4	1405-144	10
23	NUT, NYLOC M3 316/A4	1405-149	8
24	NUT, NYLOC M6 316/A4	1405-151	4
25	NUT, NYLOC M12 316/A4	1405-153	5
26	WASHER, FLAT M3 316/A4	1405-156	8
27	WASHER, FLAT M6 316/A4	1405-158	10
28	WASHER FLAT M12 ZP	1405-160	2
29	SCREW, SOCKET CAP M8 X 30 G316/A4	1405-162	4
30	SCREW, SOCKET CAP M10 X 30 G316/A4	1405-164	4
31	SCREW, BUTTON SOCKET M3 X 12 G316/A4	1405-165	4
32	SCREW, BUTTON SOCKET M6 X 16 G316/A4	1405-167	2
33	DRUM ASSEMBLY	1405-173	1
34	BRACKET, GUIDE ROLLER	1405-177	1
35	HAND WHEEL	1405-178	1
36	SPINDLE	1405-179	1
37	KEY, 5 X 5 X 18 SHAFT	1405-180	1
38	PLATE, GEARBOX NUT	1405-181	1
39	SET SCREW, HEX M8 X 25 G316/A4	1405-182	2
40	SCREW, SOCKET CAP M5 X 12 G316/A4	1405-183	1
41	WASHER, SPRING M8 316/A4	1405-184	4
1	ENCLOSURE, MAIN	1405-201	1
43	PLATE, SINGLE GEARBOX NUT	1405-202	2
44	WASHER, FENDER M5 316/A4	1405-204	1
45	SET SCREW, HEX M8 X 16 G316/A4	1405-205	2
46	SCREW, SOCKET CAP M6 X 30 G316/A4	1405-206	4
47	ASSEMBLY, DRIVE CONTROLLER	1405-221	1
48	SCREW, SOCKET CAP M4 X 12 G316/A4	1405-222	4
49	POTENTIOMETER, SPEED CONTROL	1405-223	1
50	BUTTON, RUN PUSH	1405-224	1
51	SWITCH, DIRECTION ROCKER	1405-225	1



ENCLOSURE PARTS LIST			
ITEM NO.	DESCRIPTION	PART NUMBER	QTY
1	SEAL, DUST	1405-138	2
2	NUT, NYLOC M6 316/A4	1405-151	12
3	NUT, DOME M6 316/A4	1405-154	14
4	WASHER, FLAT M6 316/A4	1405-158	4
5	DOOR, HINGED 700 X 400	1405-186	1
6	HINGE	1405-188	2
7	PLATE, ELECTRICAL BACK	1405-189	1
8	COVER, ACCESS	1405-190	1
9	SEAL, ACCESS COVER EPDM 15 X 5	1405-192	1
10	SEAL, DOOR SEAL EPDM 15 X 5	1405-193	1
11	LATCH, KEYED STAINLESS QUARTER TURN	1405-194	1
12	SCREW, HEX SOCKET CTSK M6 X 16 316/A4	1405-195	8
13	RIVET, SSBL 4-2S 1/8 X 6.1 LARGE FLANGE G304	1405-196	9
14	WEBBING, 25mm	1405-207	1
15	ENCLOSURE, MAIN	1405-208	1
16	SEAL, BATTERY PROTECTION EPDM 25mm X 3mm	1405-209	8
17	VENT, 25mm AIR	1405-210	2
18	BUCKLE, 25mm STRAP	1405-211	1
19	PLATE, CONTROL PANEL	1405-229	1
20	NUT, HEX M6 G316/A4	1405-230	4
21	SCREW, BUTTON SOCKET M6 X 25 G316/A4	1405-231	4



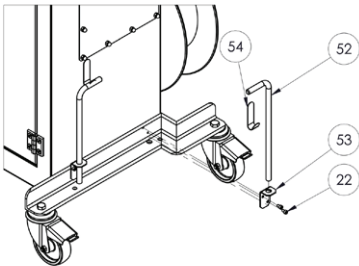
SECTION SHOWING ELECTRICAL BACKPLATE INSTALLATION



BROKEN-OUT SECTION VIEW

DROP PIN KIT			
PARTS LIST #426			
ITEM NO.	DESCRIPTION	PART NUMBER	QTY
52	PIN, 12mm DROP	1405-226	2
53	BRACKET, DROP PIN	1405-227	2
54	HOOK, DROP PIN	1405-228	2

PARTS LIST APPLICABLE TO CADDY-PRO
SERIAL NUMBERS 2107-0031 ONWARDS





Daisy Pool Covers

P 1300 55 18 11

E hello@daisypoolcovers.com.au

W daisypoolcovers.com.au